

# Practice Management System

The Lytec<sup>®</sup> practice management (PM) system from McKesson offers the stability that thousands of users trust to run their practices and get their bills paid. The latest Lytec release, Lytec 2011, is designed to help your practice accurately capture data and manage practice information to maximize cash flow. From scheduling to billing to revenue management, Lytec has your practice covered.



#### Benefits:

- Improves productivity of the scheduling and billing staff
- Simplifies patient accounting
- Speeds insurance billing and improves reimbursement
- Improves collections and reduces accounts receivable
- Tracks practice performance through multiple reports
- Reduces administrative burden for physicians so they can focus on patient care

## Accurate, Compliant Claims

Lytec is enabled for the Health Insurance Portability and Accountability Act (HIPAA) X12 version 5010 standards (referred to as ANSI 5010). These standards regulate the electronic transmission of specific healthcare transactions, including eligibility, claims, remittances, claim status and referrals. Not only does Lytec contain all of the data fields necessary to generate ANSI 5010-enabled claims, in many cases the system includes drop-down menus and the English equivalent of codes to help guide billers. As a result, billers don't have to be expert coders in order to submit claims with correct information the first time.

## Patient-friendly Statements

Lytec features complete integration with [BillFlash<sup>®</sup>](#) from NexTrust<sup>®</sup>, allowing you to upload electronic patient statements directly from Lytec. Not only does [BillFlash](#) produce professional patient statements – which are proven more likely to be paid – it can save your practice time and money in the process. In addition, many Lytec screens enable you to directly access a patient statement on the [BillFlash](#) web site simply by clicking an eView icon or button. So you always have easy access to the exact statement that your patient received.

*Go to next page to learn how Lytec supports a seamless practice management workflow.*

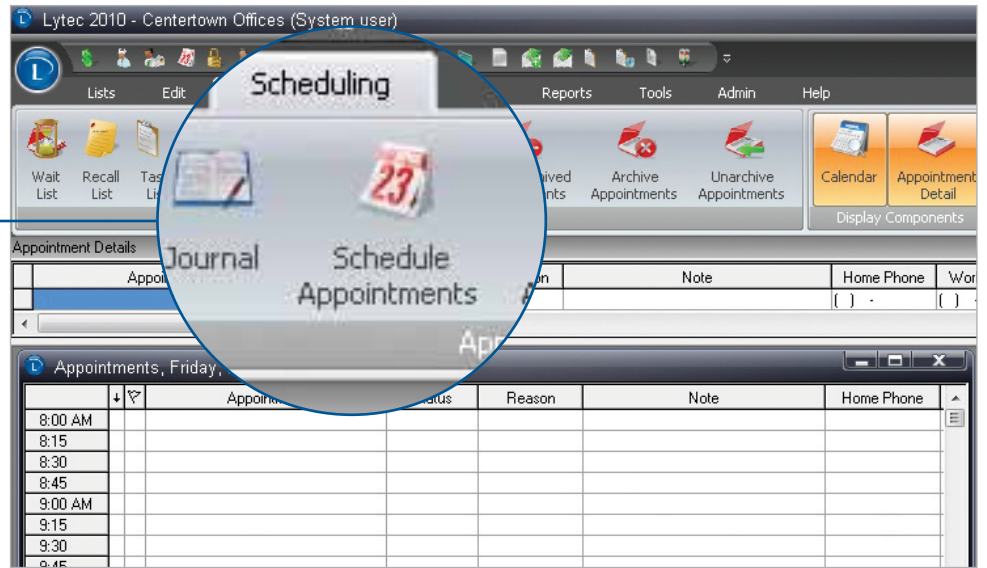


## Seamless Practice Management Workflow

From the time you schedule a patient to the time you get paid for the services you provide, Lytec 2011 helps you efficiently manage your practice workflow.

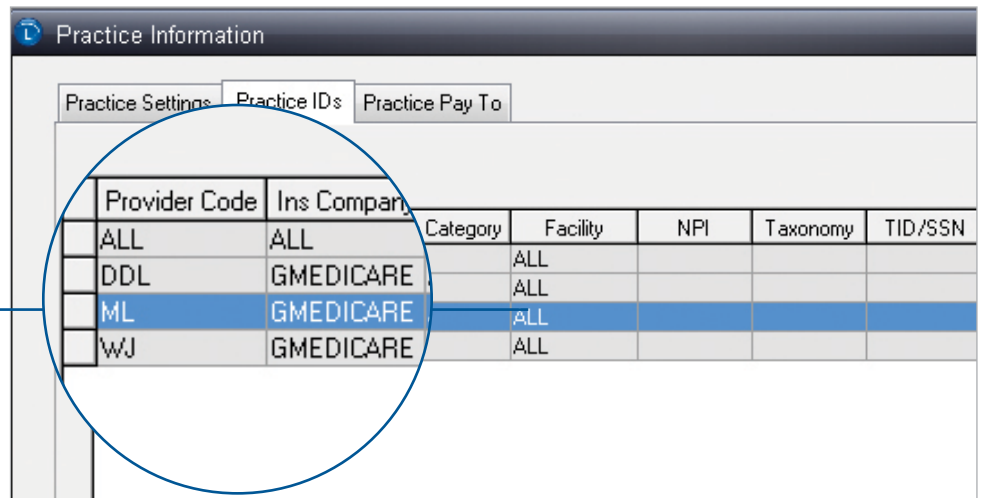
### Scheduling

Using the Lytec appointment scheduler, a coordinator can view appointments in a number of ways. Thanks to the flexibility of the system, a coordinator is able to quickly find the best appointment to meet both the patient's and the practice's needs.



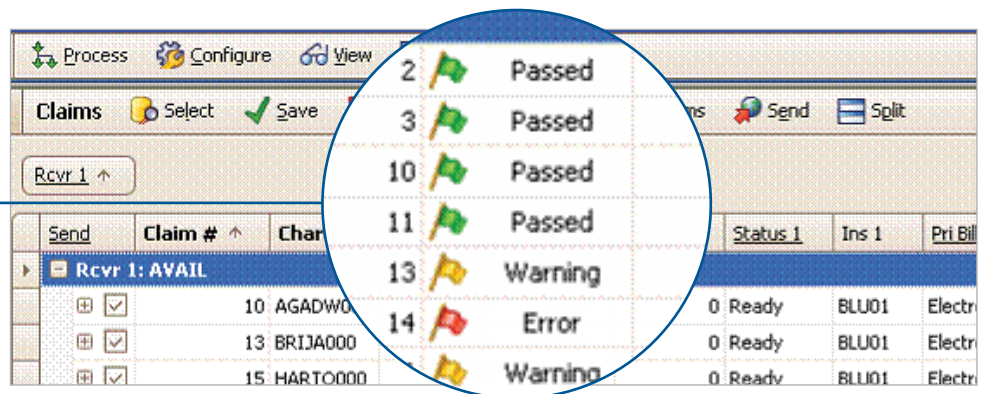
### Billing

Claims are generated using customizable rules-based grids that allow your practice to easily address different carrier filing requirements. The flexibility of the grid system enables you to enter limitless claim submission scenarios, and it gives your practice the flexibility it needs to make changes to address future payer changes and government mandates.



### Revenue Management

The Revenue Management feature in Lytec 2011 enables you to check for errors with pre-claim editing and ANSI validation before you submit your claims for payment. Revenue Management also checks for insurance eligibility before a service is performed. Finally, Revenue Management translates and displays the 835 electronic remittance advice (ERA) in an intuitive window that allows the biller to review the payment information, make changes if necessary, and post (or not post) each individual payment and adjustment.



To learn more, contact your McKesson Value Added Reseller or visit [www.lytec.com](http://www.lytec.com).



**MCKESSON**