

THE ASPEN

TRADEMARK SERIES 1525

Preliminary Brochure
Subject to Change



Traditional - A



Country - B



Americana - C

THE LINKS OF
ENGLISH MEADOWS
LEXINGTON HOMES

THE ASPEN

1525

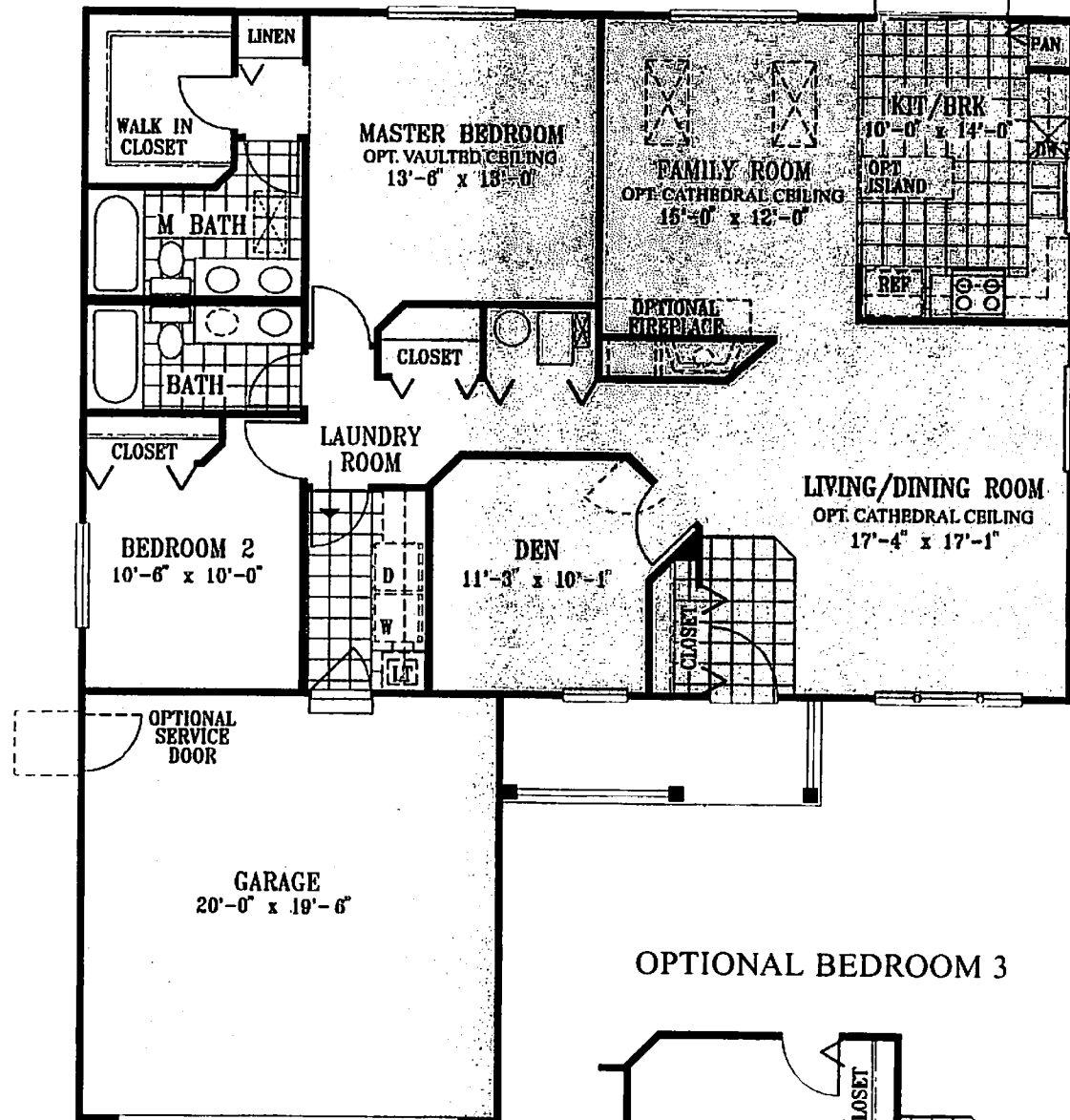
TRADEMARK SERIES

The casual elegance of the Aspen model is reminiscent of the charming resort town that shares its name. A free-flowing floor plan directs traffic from the expansive living/dining room to the family room with optional fireplace, and the eat-in kitchen with sliding glass doors, pantry and optional work island. A master suite with private bath and walk-in closet can be given a feeling of even greater spaciousness with the volume ceiling or bay window. Additional space for family or guests is provided by a second bedroom and bath, as well as a private den or third bedroom. A convenient laundry room leads to the attached two-car garage. The optional basement includes space for a future recreation room and additional bath.

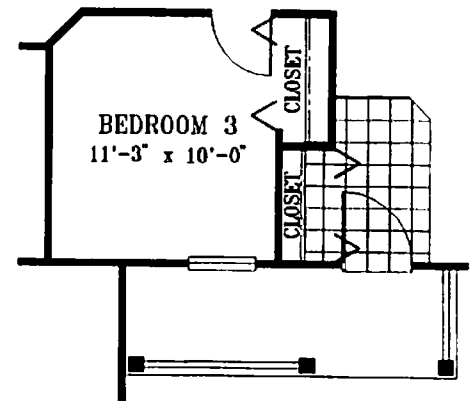
BREAKFAST BAY
WINDOW OPTION



FIRST FLOOR

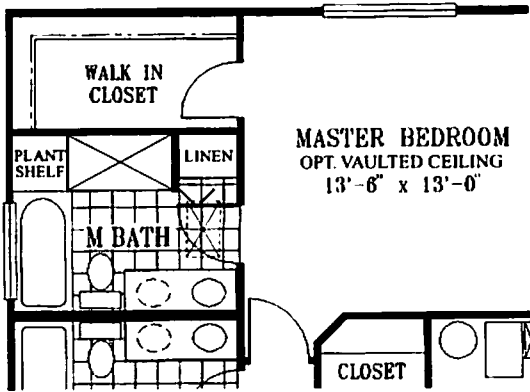


OPTIONAL BEDROOM 3



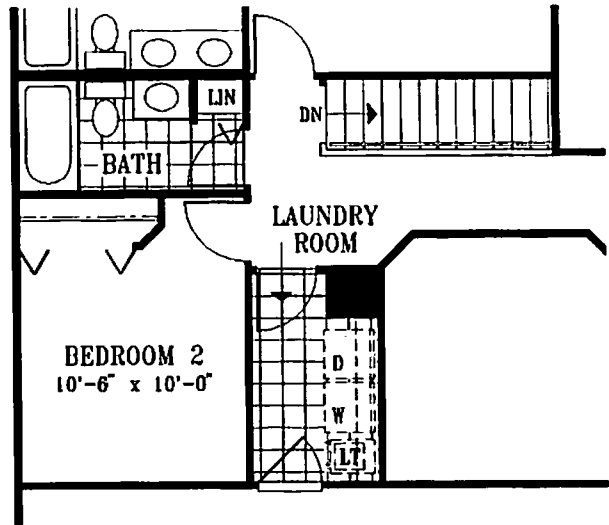
THE LINKS OF
ENGLISH MEADOWS
LEXINGTON HOMES

OPTIONAL MASTER BATH

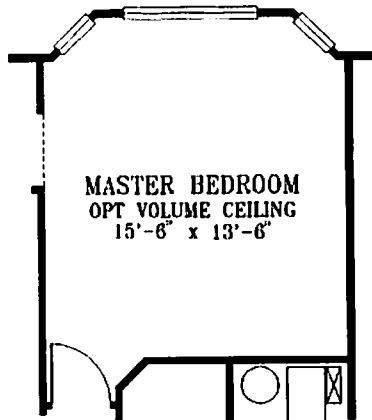


MASTER BEDROOM
OPT. VAULTED CEILING
13'-6" x 13'-0"

FIRST FLOOR WITH BASEMENT OPTION

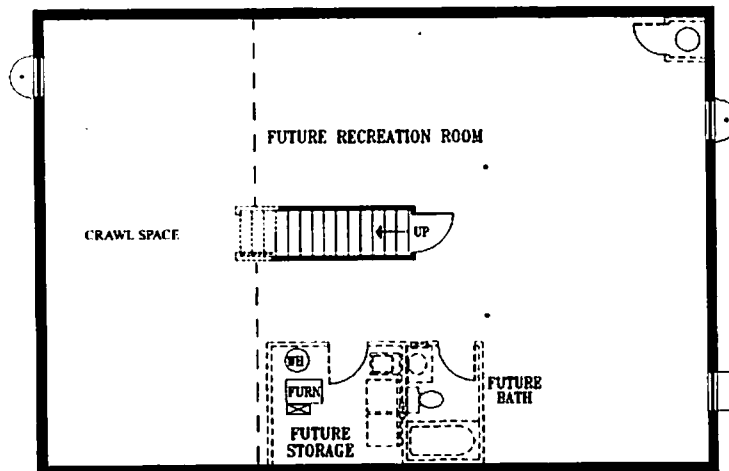


MASTER BEDROOM BAY WINDOW OPTION



MASTER BEDROOM
OPT VOLUME CEILING
15'-6" x 13'-6"

BASEMENT OPTION



The Lexington Homes policy of continual attention to design and construction requires all specifications, design, materials, dimensions and prices are subject to change without notice. Also room dimensions and design may change depending on exterior architectural style selected. The depicted floor plans, landscaping and exterior styling are artists' interpretations only. Please refer to the plans and specifications in the Sales Center for current information.