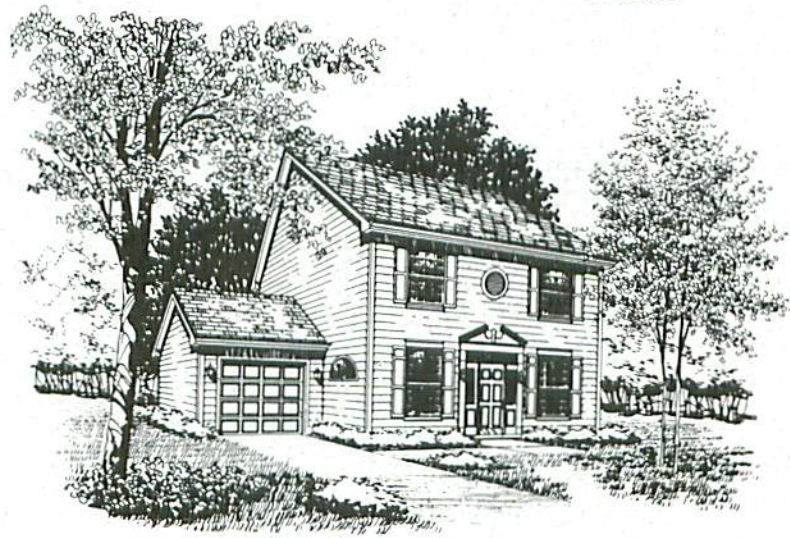


Tudor



Americana



Traditional



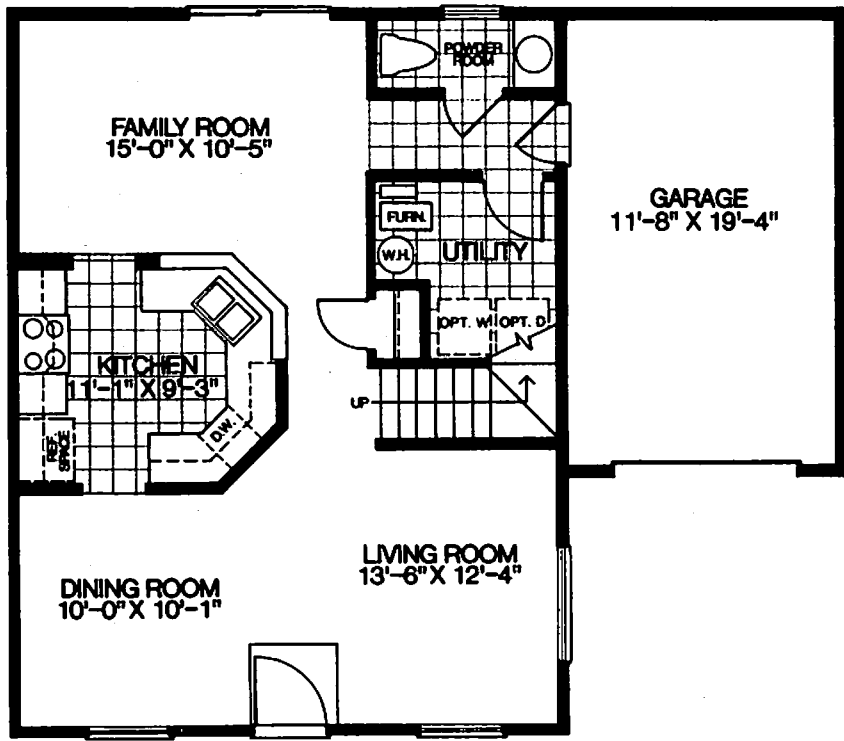
**COLLEGE  
TRAIL**

BY CAMBRIDGE HOMES, INC.

*Richard J. Braun*

**708-548-1185**

Illustrations and landscaping are artist's conception.  
Please consult with your Sales Representative for current details.



FIRST FLOOR PLAN



# CAMDEN

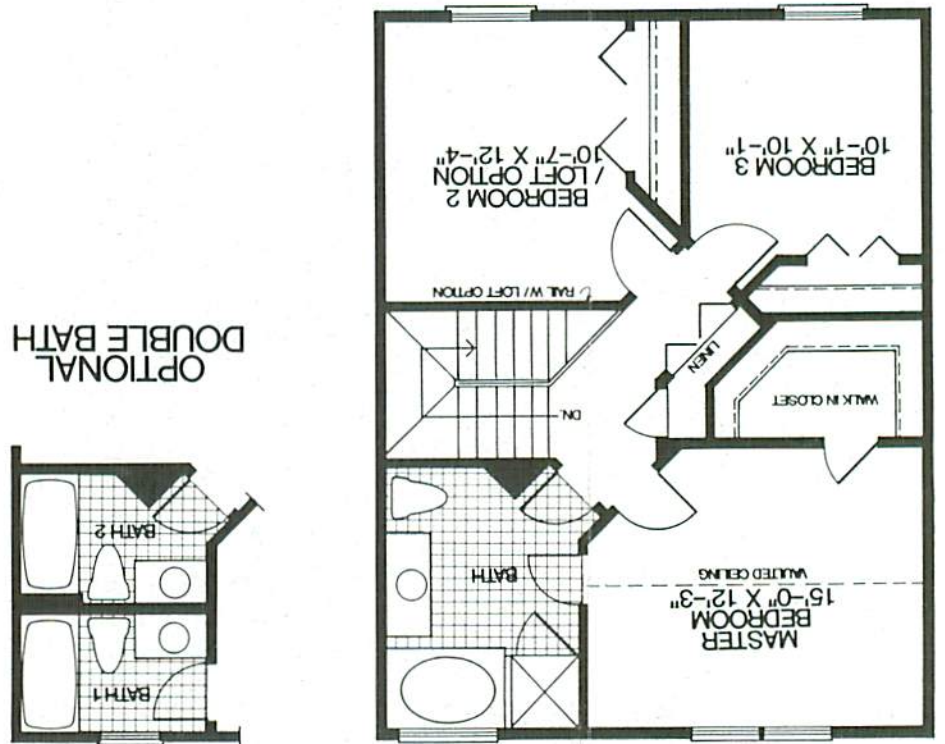
## The Camden

Fresh, original, and very dramatic! Those are the comments most often heard about the "Camden." From its unique entry directly into the living/dining room area, to its curving U-shaped kitchen and adjacent family room — everything has been carefully planned to keep traffic moving smoothly. Nine-foot ceilings and oversized windows, a charming powder room and large utility room are other first floor delights.

The second level provides for a spacious master bedroom with soaring vaulted ceiling, extra-large walk-in closet, and bath. The plans allow for an optional double bath should your needs require. Bedroom number two features a dramatic loft option. A third bedroom and convenient linen closet complete this level. The "Camden" offers young families a creative, sun-filled environment of comfort and convenience. Our families call it the perfect first home!

Cambridge Homes, Inc. policy of continual attention to design and construction requires that specifications, equipment, dimensions and price be subject to change without notice. Please consult your Sales Representative for current details.

## SECOND FLOOR PLAN





CAMBRIDGE HOMES, INC.

By *Richard J. Brown*

© COPYRIGHT 1991, CAMBRIDGE HOMES, INC.

E-6-91

