

THE FIELDSTONE

TRADEMARK SERIES 530



Classic - C



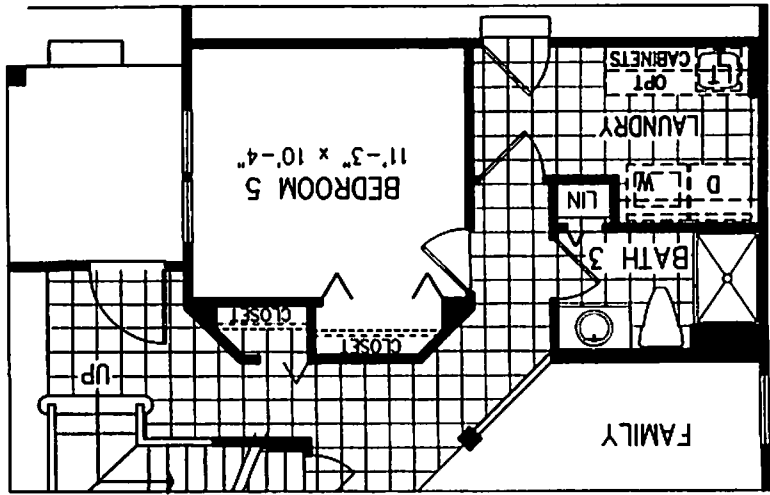
Traditional - A



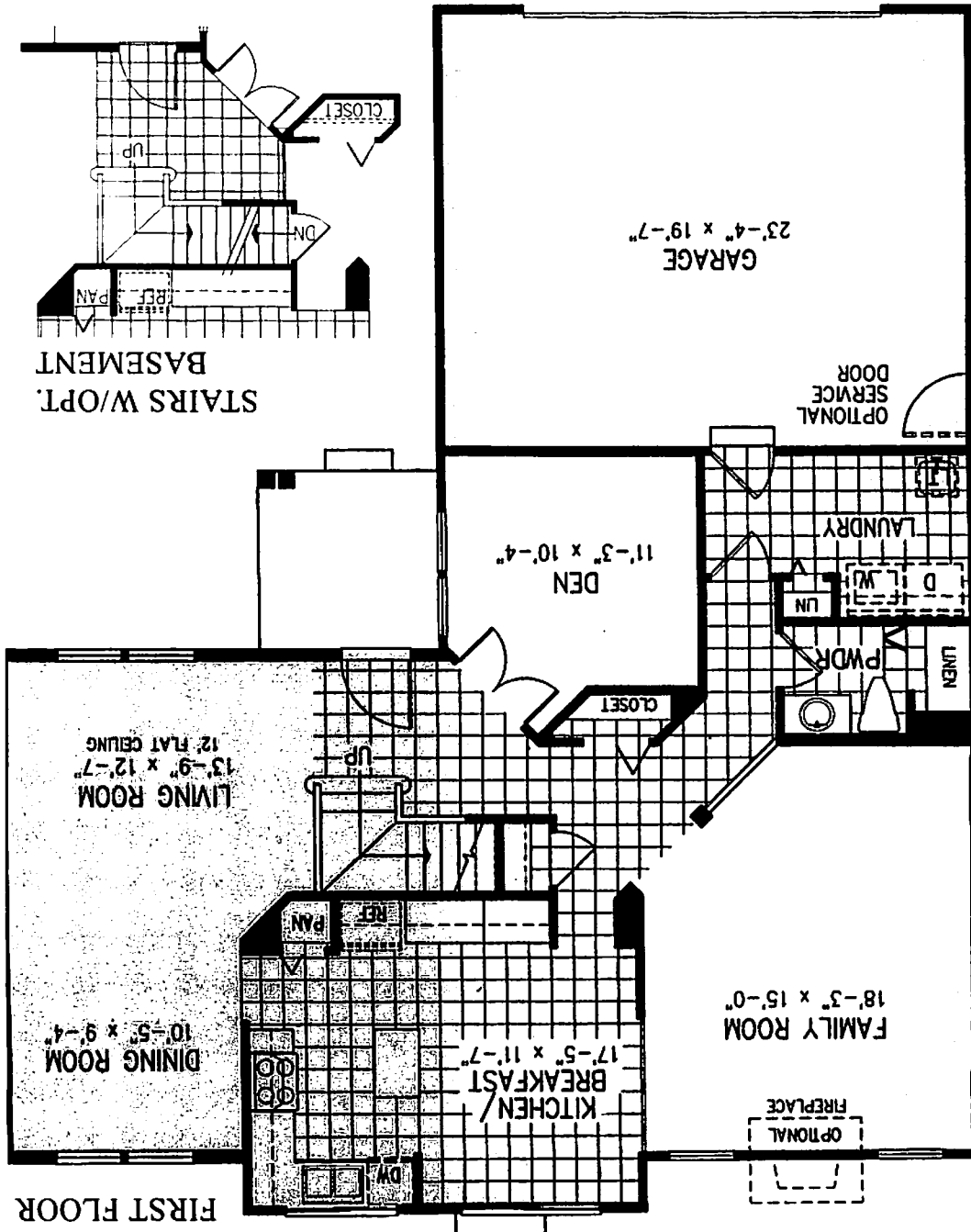
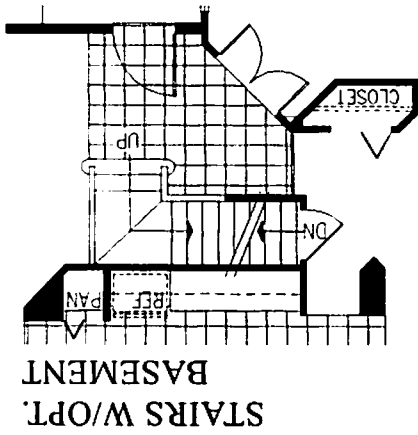
Americana - B

THE LINKS OF
ENGLISH MEADOWS
LEXINGTON HOMES

LEXINGTON HOMES
**THE LINKS OF
 ENGLISH MEADOWS**



OPT. BEDROOM 5 & BATH 3



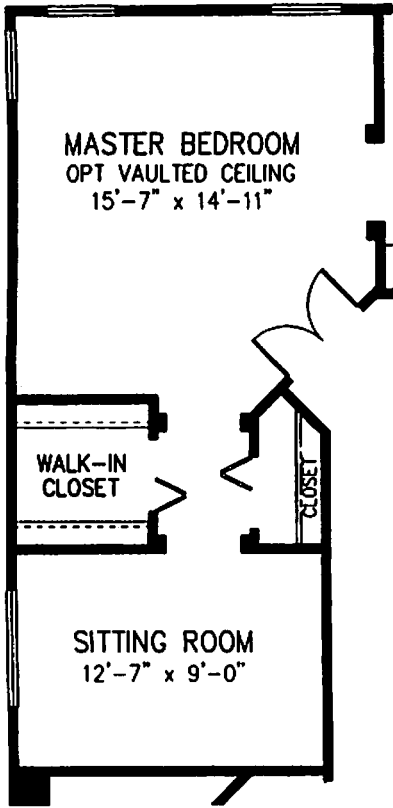
A two-story foyer welcomes visitors to the Fieldstone model, and an airy, high-ceilinged living room and formal dining room make an elegant first impression. The expansive kitchen features a center work island, pantry, and breakfast area brightened by sliding glass doors. A fireplace can be added to the comfortable family room. A powder room and laundry with access to the two-car garage add convenience, and a cozy den or extra bedroom makes a peaceful retreat.

The gracious open staircase rises to the double doors of the master bedroom suite. Inside, a large master bath can be further upgraded with a luxurious soaker tub and separate shower. Large walk-in closets provide ample storage space, and a sitting room can be added. Three additional bedrooms and a hall bath with optional skylight complete the second floor.

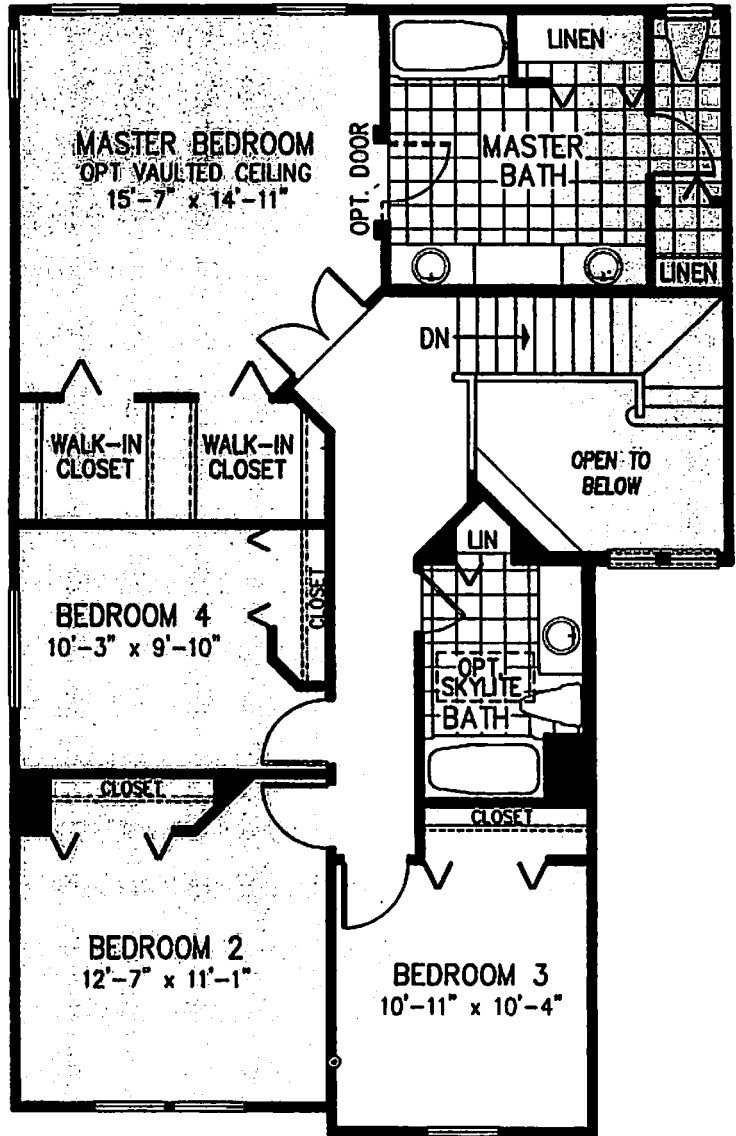
TRADEMARK SERIES

530
 THE FIELDSTONE

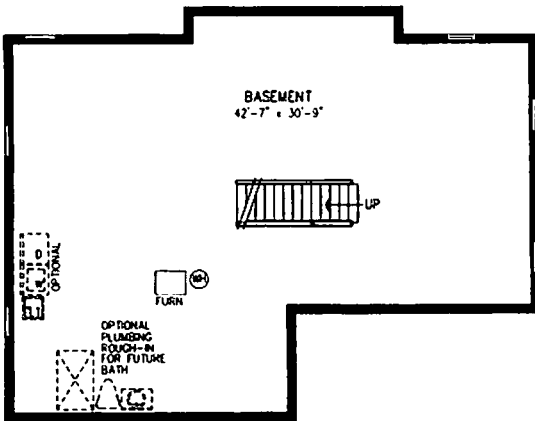
OPT. SITTING ROOM



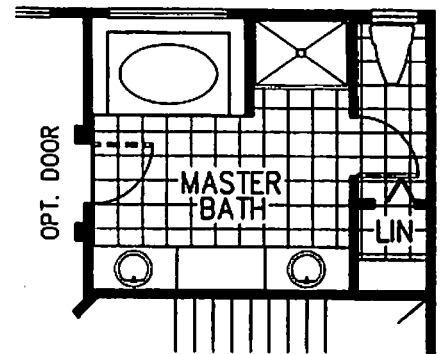
SECOND FLOOR



OPTIONAL BASEMENT



OPT. LUXURY BATH



The Lexington Homes policy of continual attention to design and construction requires all specifications, design, materials, dimensions and prices are subject to change without notice. Also room dimensions and design may change depending on exterior architectural style selected. The depicted floor plans, landscaping and exterior styling are artists' interpretations only. Please refer to the plans and specifications in the Sales Center for current information.