

# THE KENILWORTH

TRADEMARK SERIES 521



*Traditional*



*Victorian*



*Classic*

English Meadows

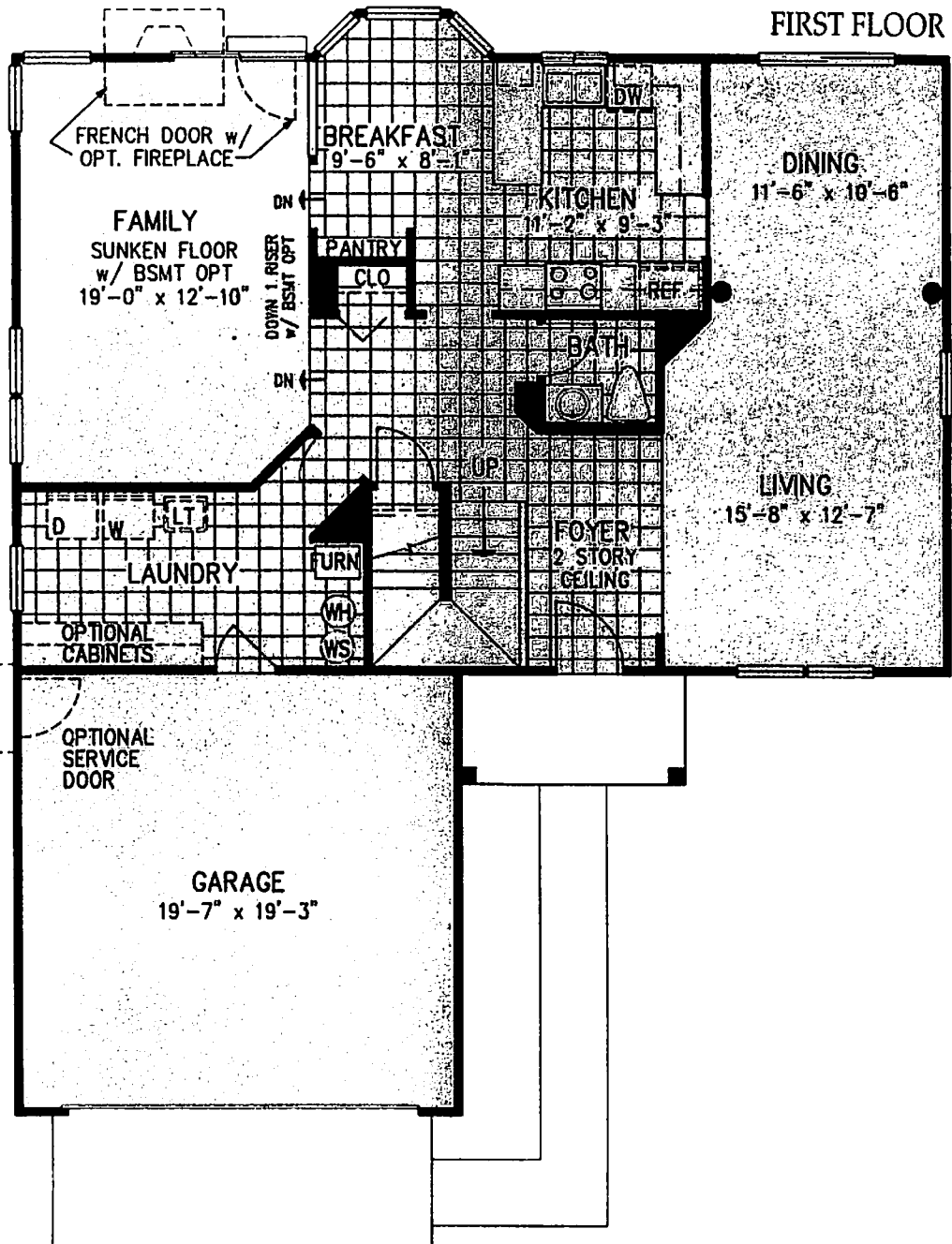
LEXINGTON HOMES

# KENILWORTH

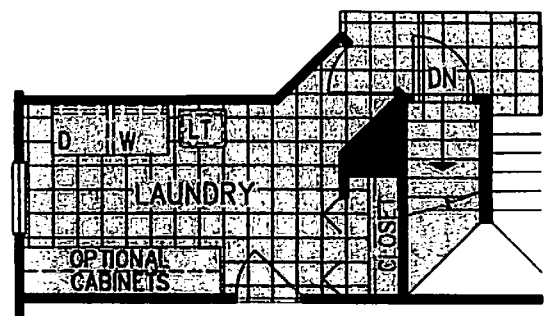
## 521

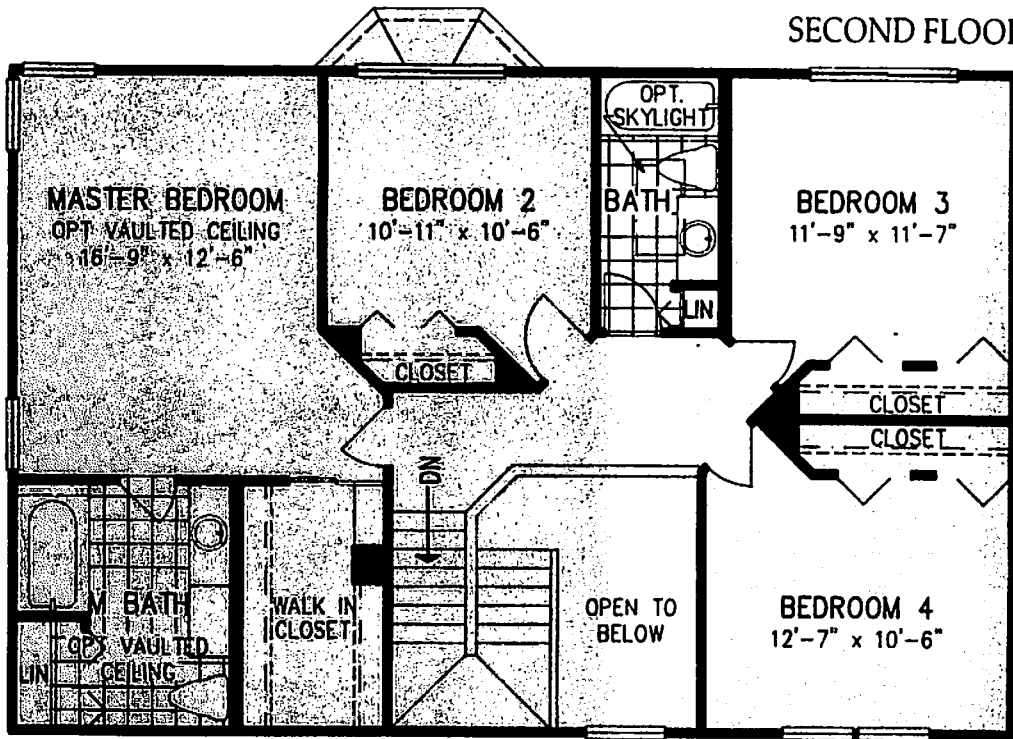
TRADEMARK SERIES

This expansive home features a living room, separate dining room and separate family room with optional fireplace and French door. The kitchen has a peninsula counter and separate breakfast area with bay window. The master bedroom suite has a walk-in closet, optional volume ceiling and a master bath with luxury bath option. You also have the option of a private sitting room (in lieu of second bedroom) and a full basement with a dramatic sunken family room. There are 4 bedrooms and 2 1/2 baths. A laundry room and 2-car garage are standard.

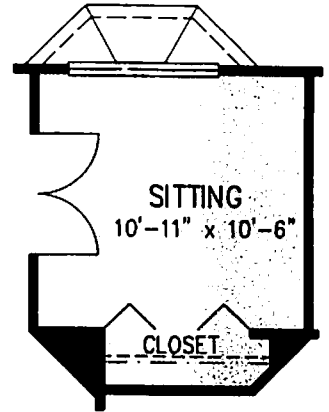


STAIRWAY LOCATION FOR OPTIONAL BASEMENT

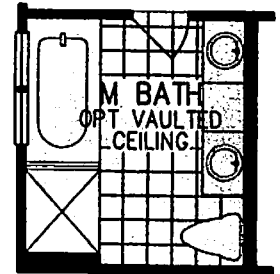




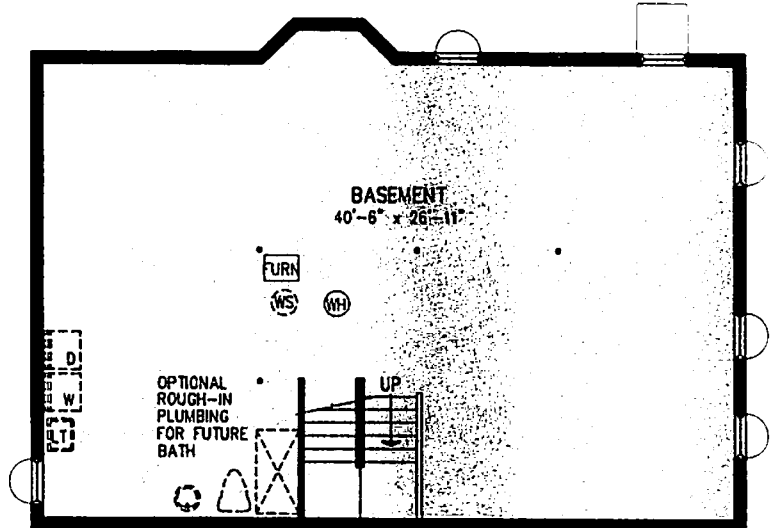
**OPTIONAL SITTING ROOM**



**OPTIONAL LUXURY BATH**



**OPTIONAL BASEMENT**



The Lexington Homes policy of continual attention to design and construction requires all specifications, design, materials, dimensions and prices are subject to change without notice. Also, room dimensions and design may change depending on exterior architectural style selected. The depicted floor plans, landscaping and exterior styling are artists' interpretations only. Please refer to the plans and specifications in the Sales Center for current information.

We are pledged to the letter and spirit of the United States policy for the achievement of equal housing opportunity throughout the nation. We encourage and support an affirmative advertising and marketing program in which there are no barriers to obtaining housing because of race, color, religion, sex, handicap, familial status or national origin.