

ENGLISH MEADOWS G.

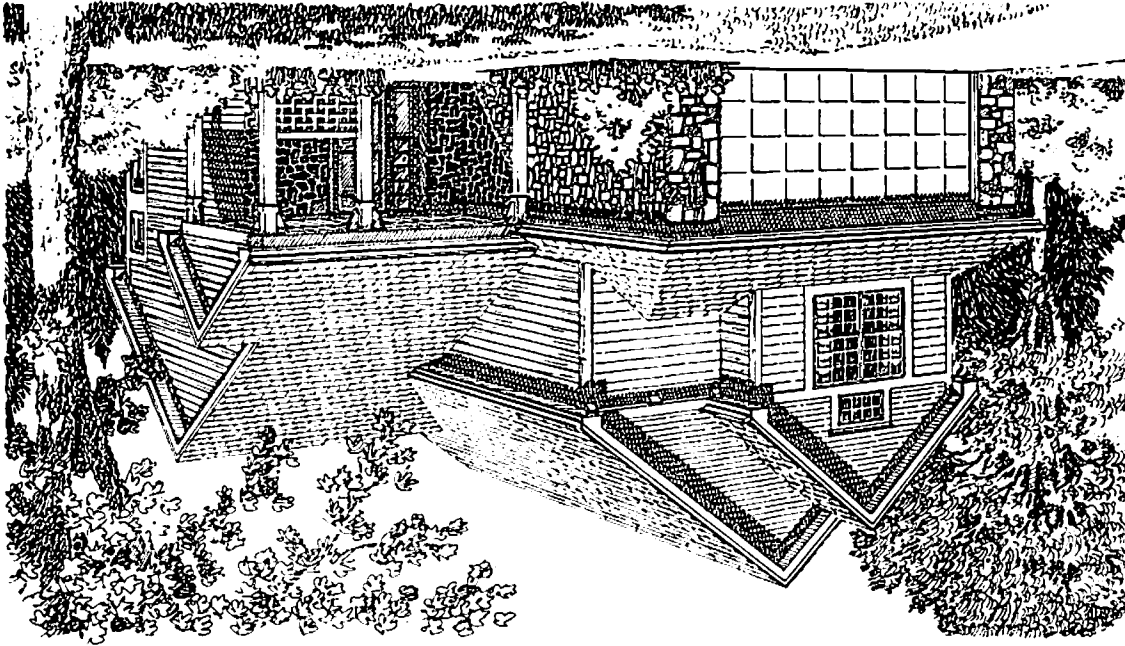
**THE
LINDEN
PLAN 220
TWO-STORY HOME**

2 or 3 bedrooms; 1½ or 2½
baths; loft; soaring two-story
entry foyer and living room;
formal dining room; kitchen and
bay-windowed breakfast room;
master bedroom suite with
walk-in closet and optional
master bath; and two-car
garage. A basement and third
bedroom (in lieu of the loft)
are optional.

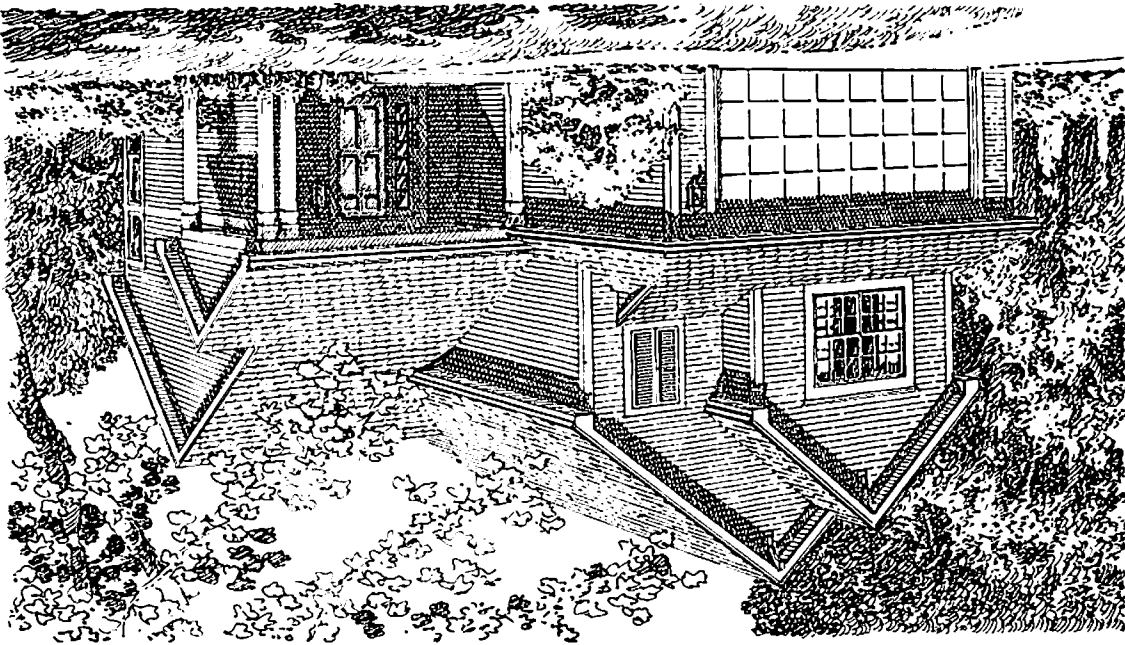
Sales Center:
205 Lexington Court
Grayslake, IL 60030
Phone: (708) 548-1172

*Homestead
Series*

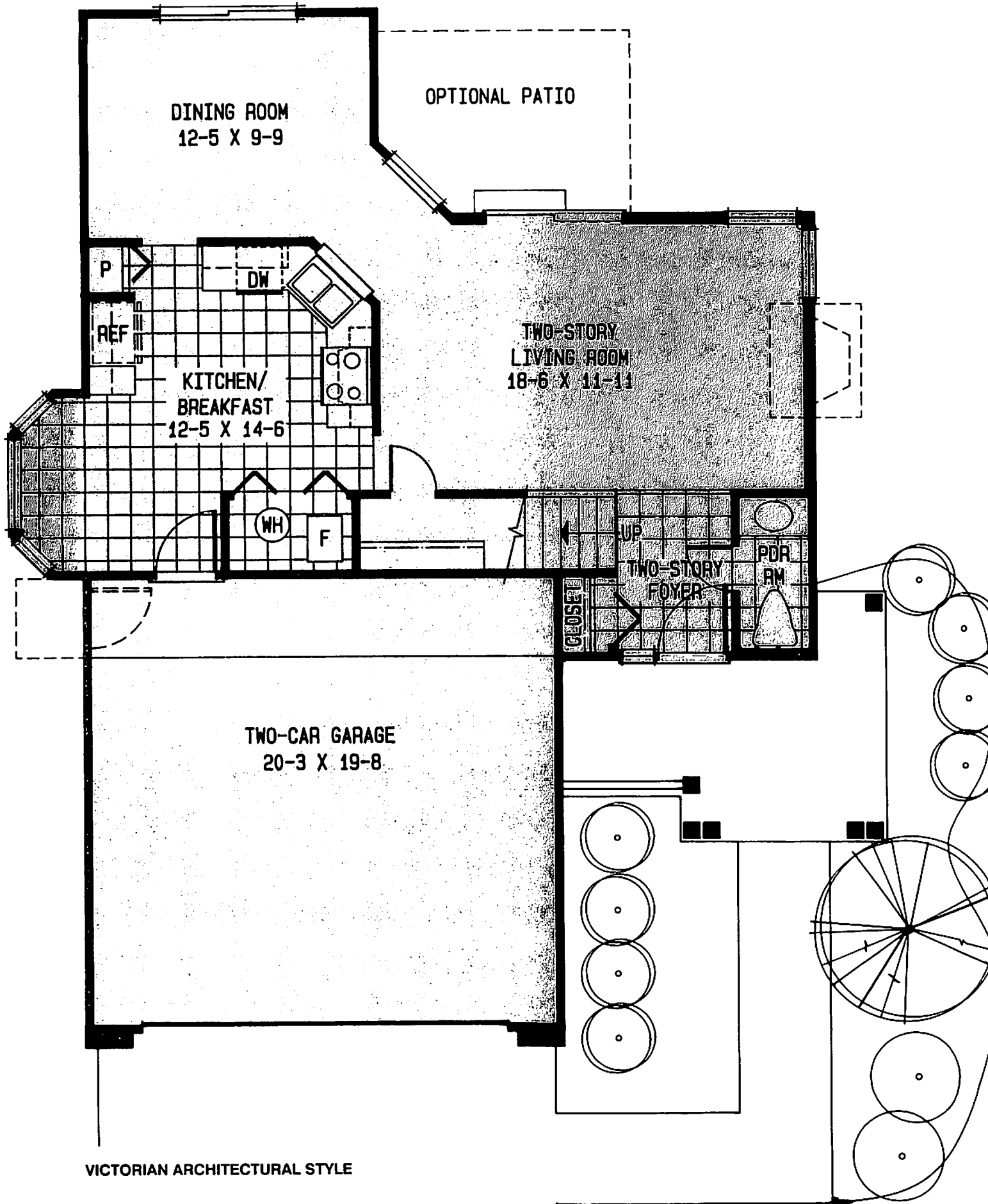
RUSTIC



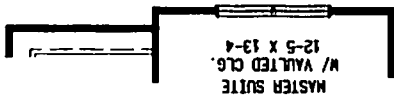
TRADITIONAL



FIRST FLOOR

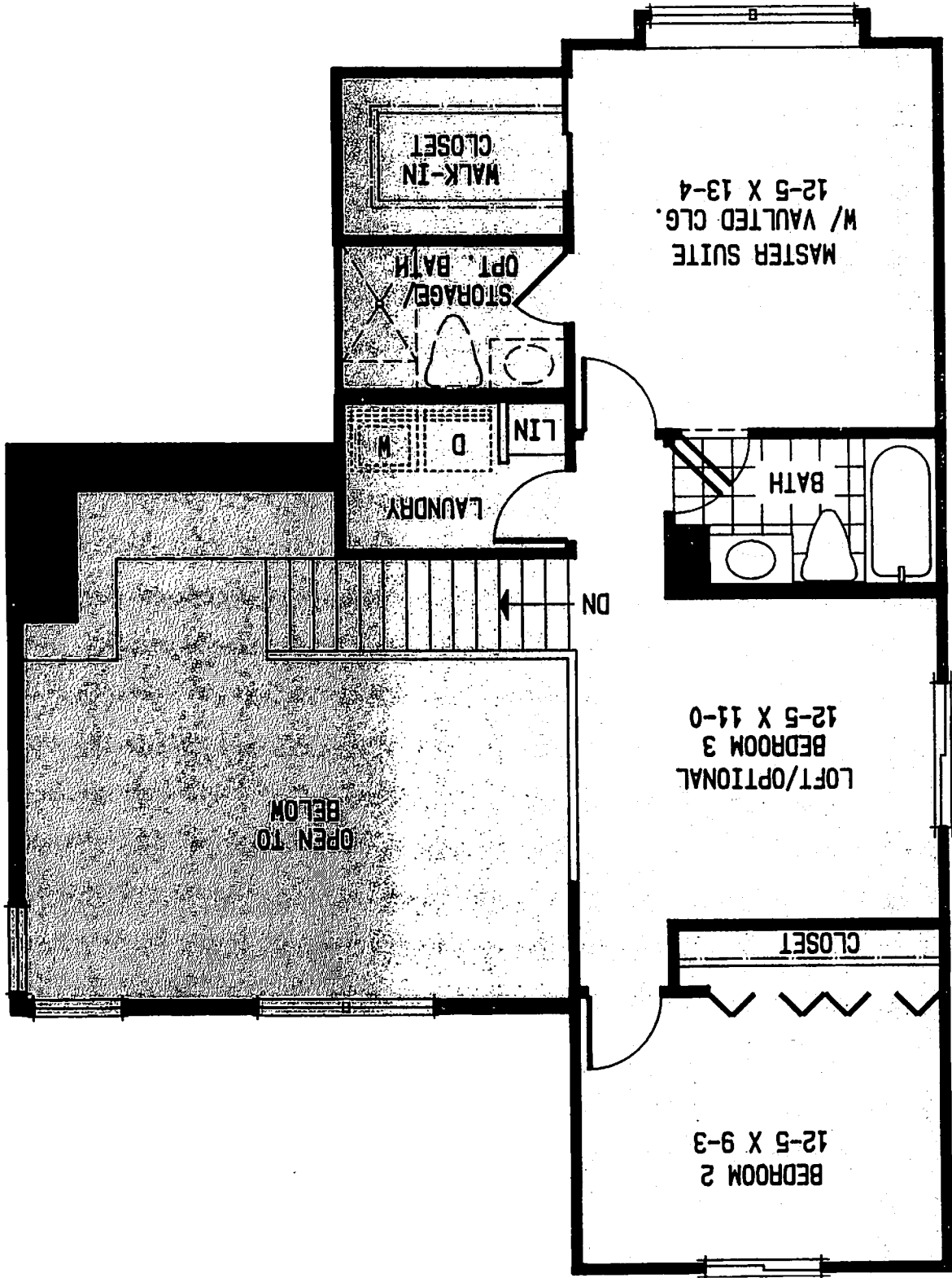


TRADITIONAL, RUSTIC, CLASSIC



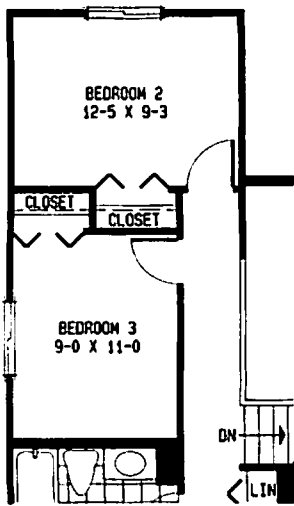
ALTERNATIVE EXTERIOR
ARCHITECTURAL STYLES

VICTORIAN ARCHITECTURAL STYLE

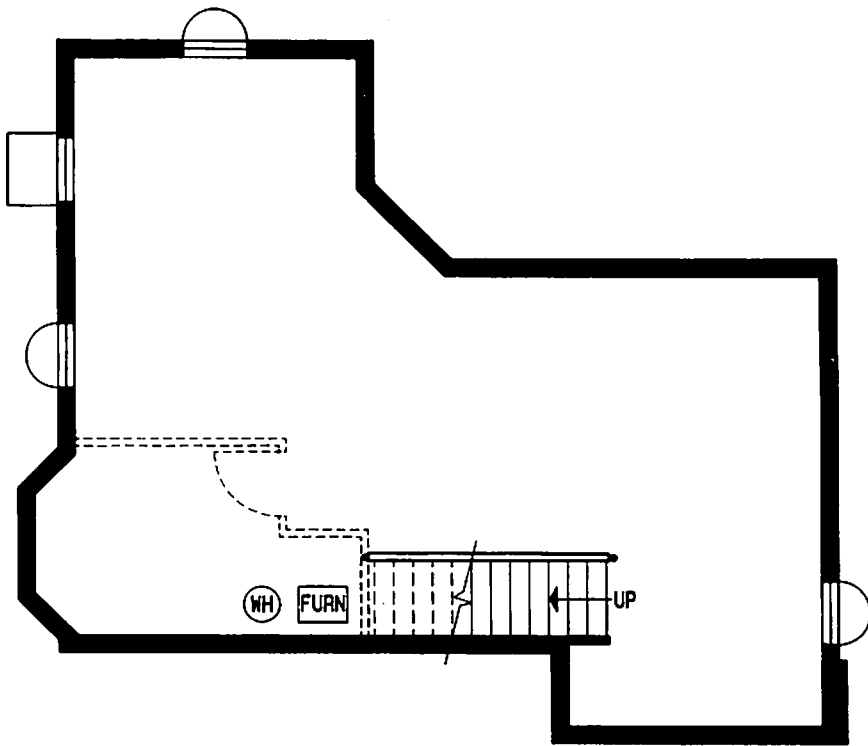


SECOND FLOOR

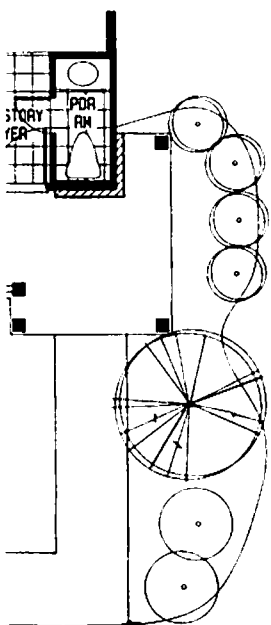
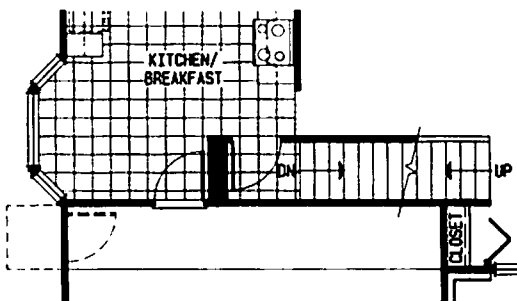
OPTIONAL THIRD BEDROOM



OPTIONAL BASEMENT



STAIRWAY LOCATION FOR OPTIONAL BASEMENT



ENGLISH MEADOWS

**THE LINDEN
PLAN 220
TWO-STORY HOME**

2 or 3 bedrooms; 1½ or 2½ baths; loft; soaring two-story entry foyer and living room; formal dining room; kitchen and bay-windowed breakfast room; master bedroom suite with walk-in closet and optional master bath; and two-car garage. A basement and third bedroom (in lieu of the loft) are optional.

Sales Center:
205 Lexington Court
Grayslake, IL 60030
Phone: (708) 548-1172

Homestead Series

Plans and specifications in the Sales Center for current details.
This program in which there are no barriers to obtaining housing because of race, color, religion, sex, handicap, familial status or national origin."