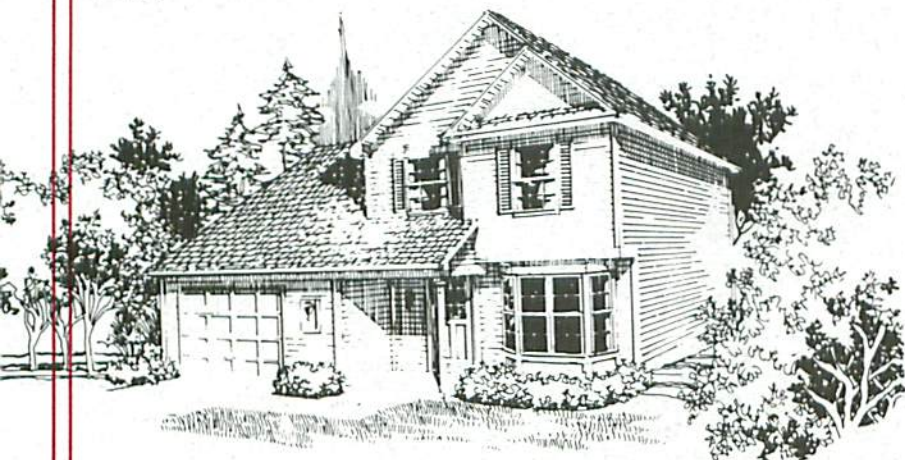
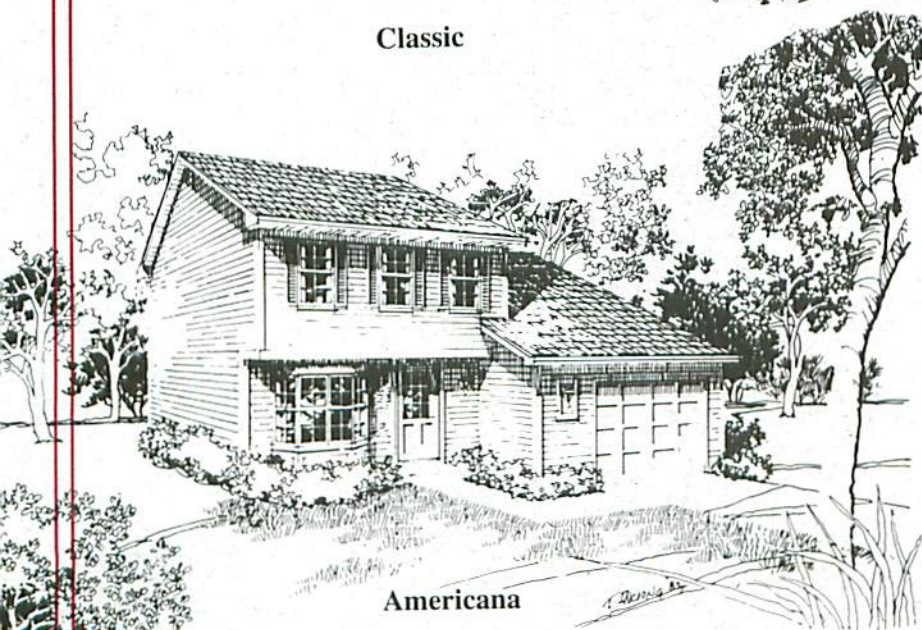


Provincial



Classic



Americana

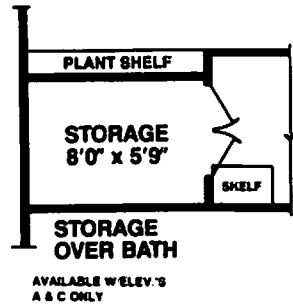
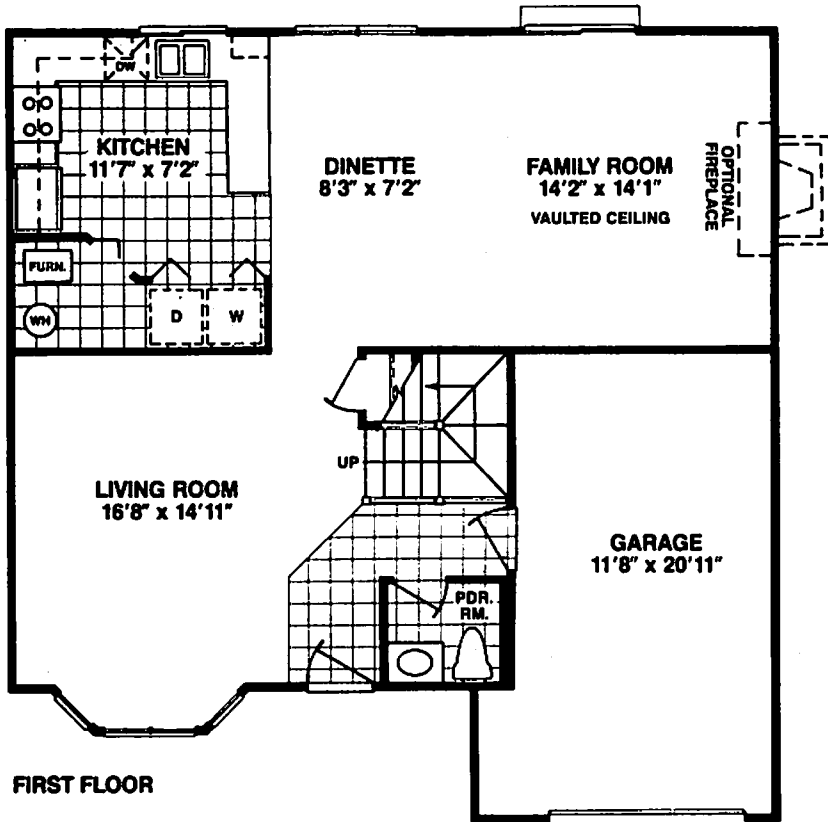


## COLLEGE TRAIL

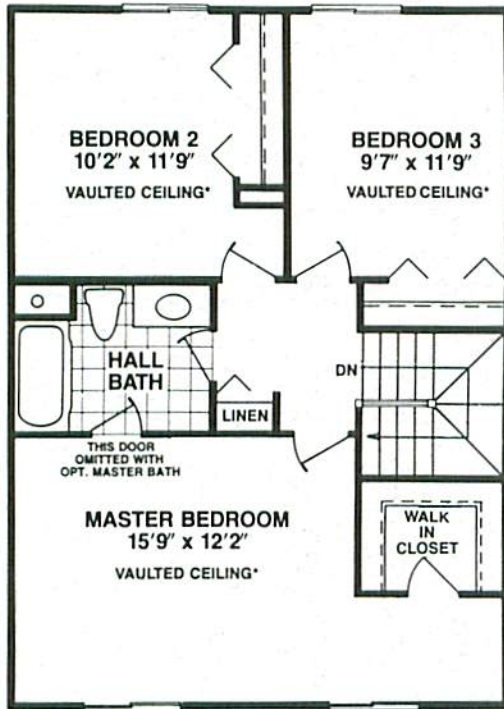
BY CAMBRIDGE HOMES, INC.

*Richard J. Brown*

Illustrations and landscaping are artist's conception.  
Please consult with your Sales Representative for current details.

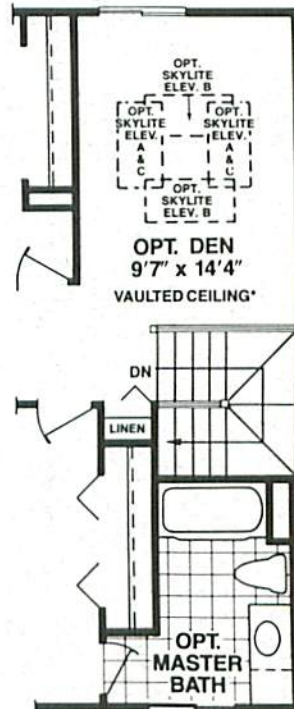


# MARLOWE



**SECOND FLOOR**

\*VAULTED CEILING VARIES WITH ELEVATION



**OPT. DEN  
OPT. MASTER BATH**

NOTE: WITH OPTIONAL MASTER BATH MASTER BEDROOM IS 13'6" x 12'2"

## The Marlowe

You have never seen any home quite like this for exciting liveability and affordable spaciousness.

The drama begins with a tiled entry foyer leading to a spacious living room with bay window. A graceful staircase opens to a country-sized U-shaped kitchen for cozy family dinners. Another center of family life is the family room, where you may opt for a woodburning fireplace.

Upstairs, the master bedroom has a vaulted cathedral ceiling of its own. Of the two other bedrooms, one can be a den with a balconied railing that looks down over the first floor foyer.

Other inviting features include patio doors in the family room, and attached garage with extra storage space. Options of a fireplace and a second full bath are available.

Cambridge Homes, Inc. policy of continual attention to design and construction requires that specifications, equipment, dimensions and price be subject to change without notice. Please consult your Sales Representative for current details.



**CAMBRIDGE  
HOMES, INC.**  
GARDEN  
HOMES



CAMBRIDGE HOMES, INC.

By *Richard J. Brown*

©COPYRIGHT 1990, CAMBRIDGE HOMES, INC.

