

# THE NORMANDY

TRADEMARK SERIES 195



*English Country - B*



*Traditional - A*



*Prairie - C*

THE LINKS OF  
**ENGLISH MEADOWS**  
LEXINGTON HOMES

# THE NORMANDY

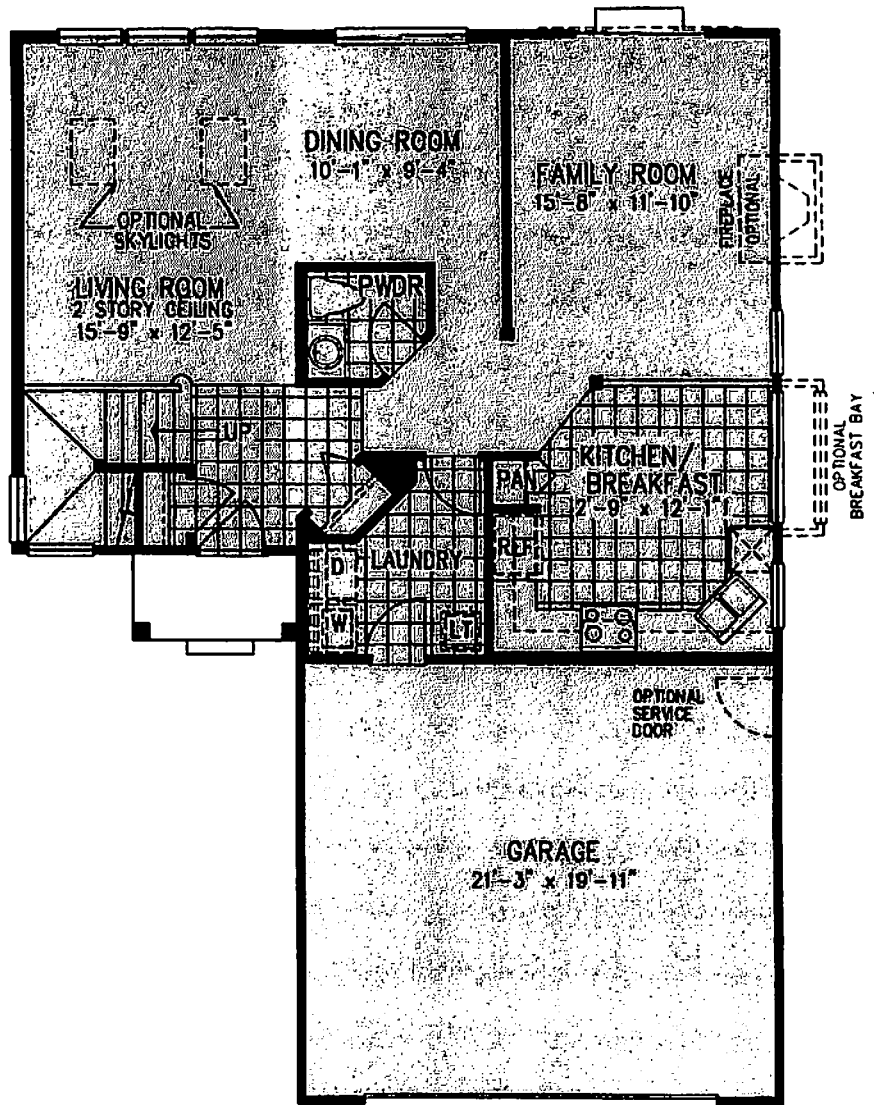
# 195

TRADEMARK SERIES

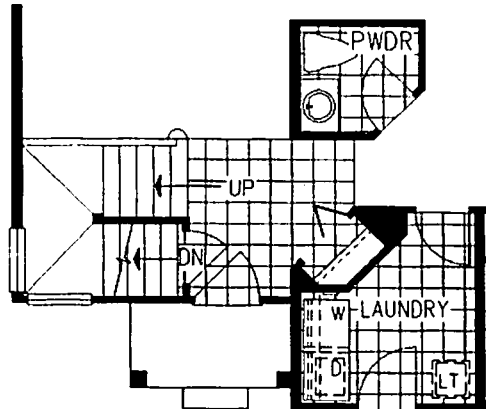
The bright and airy Normandy model is lit from all sides by soaring windows and optional skylights. The open floor plan allows the light to flow from 2-story living room, to dining room, family room and large kitchen, with its optional breakfast bay. A powder room and laundry, with access to the two-car garage, add convenience.

Light floods the second floor as well, and optional vaulted ceilings and skylights add to the glow. The master bedroom suite features a walk-in closet and private bath, or upgraded bath with oversize tub and separate shower. This level also includes two additional bedrooms, a hall bath, and a loft, fourth bedroom, or sitting room.

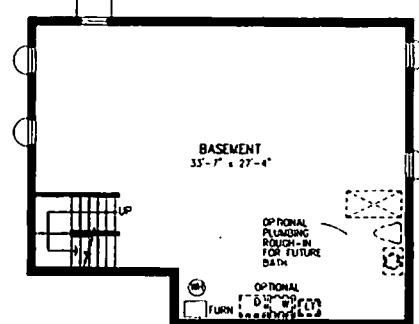
FIRST FLOOR



STAIRS W/OPT. BASEMENT

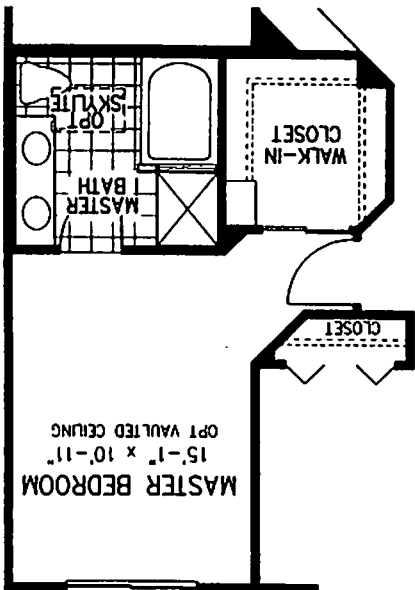


OPT. BASEMENT

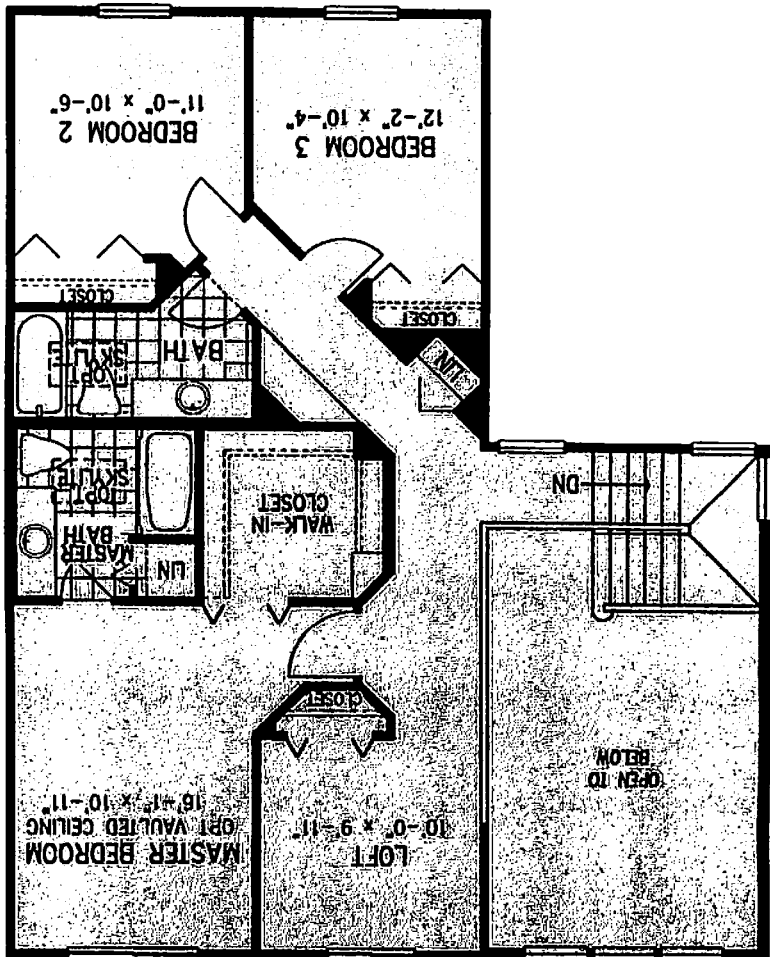


THE LINKS OF  
ENGLISH MEADOWS  
LEXINGTON HOMES

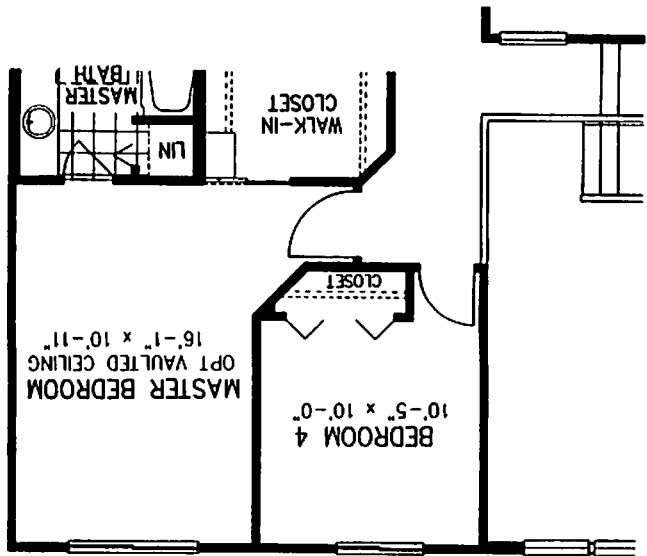
The Lexington Homes policy of continual attention to design and construction requires all specifications, design, landscaping and exterior styling are subject to change without notice. Also room dimensions and design may change depending on exterior architectural style selected. The depicted floor plans, design, landscaping and exterior styling are artists' interpretations only. Please refer to the plans and specifications in the Sales Center for current information.



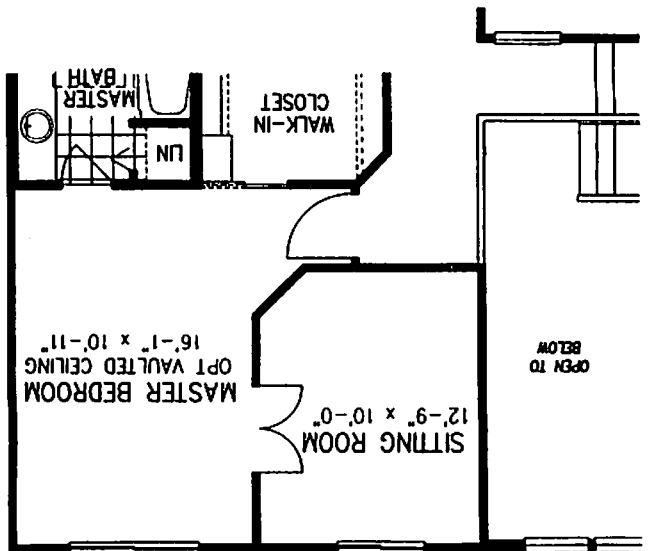
OPTIONAL LUXURY BATH



SECOND FLOOR



OPTIONAL BEDROOM 4



OPTIONAL SITTING ROOM