

Alarm integration

Your facility is full of systems monitoring everything from exit doors and windows to mechanical and kitchen equipment. Integrate these devices into the RoamAlert® software to consolidate alarm reporting, distribute alarm information to staff on the move, and create a database of events for later review.

Central control of all your systems

In addition to monitoring alarms, the RoamAlert system can also control devices. Whether you want to lock exit doors after a certain time at night, or activate a video camera when someone opens a supply cabinet, the RoamAlert system can accomplish the task, and capture information on the event.

How it works

This functionality is made possible through the combination of the I/O-8 Module and the RoamAlert software. The I/O-8 Module is an integral part of the RoamAlert system and is configured and controlled by the software. Each I/O-8 Module has eight ports that can be configured to accept alarms or activate devices.

The module receives inputs from other devices when an event of some kind occurs; for example, a window being opened. The system can then respond by activating another device, or generating a notice in the RoamAlert software. You have great flexibility to configure a custom response to any event.

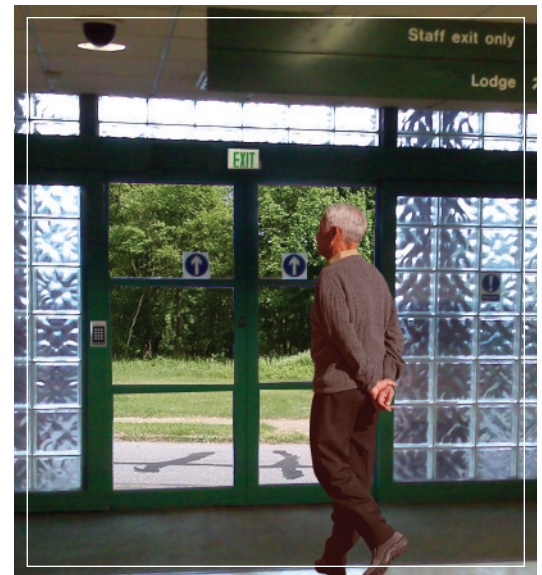
The RoamAlert software captures complete information on the event for future review, including the date and time, and staff notes (if this feature is used).

In addition to alarms in the RoamAlert software, you can also notify staff remotely via pager. The RoamAlert system can also interface with third-party software to enable alarm notification via text messages or e-mail to any hand-held device enabled for this.

Example applications

The range of possibilities for alarm integration is practically endless. Some of the applications that have been implemented include:

- Detecting when doors or windows are opened, and activating a video camera or sounder when this happens;
- Global lock down of doors at certain times of day, or based on an alarm event like a theft;
- Monitoring of sump pumps, freezers, medical equipment or any other device with a contact output;
- Reporting from fixed emergency call buttons placed throughout the building for residents or staff;
- Activating lights, sounders or gates based on either the time of day, alarm input or user intervention.



A possible application: the door opener is disabled when a resident triggers a motion sensor

Key components

- I/O-8 Module (AR3IM01-008)