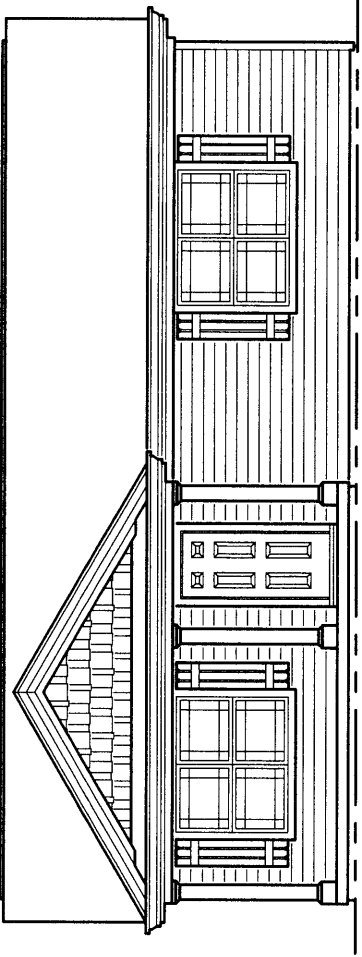




The Brentwood

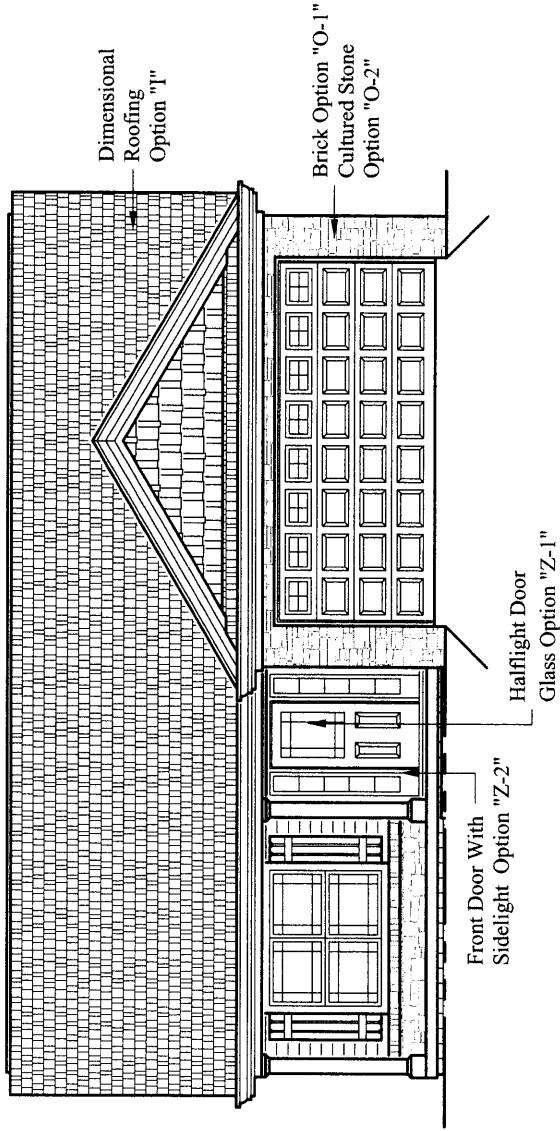
Base Model (Subject To Change) : \$137,900

Base Price Does Not Include Lot Premium



See Reverse Side for Floor Plans

BRENTWOOD shown below with OPTIONAL FEATURES



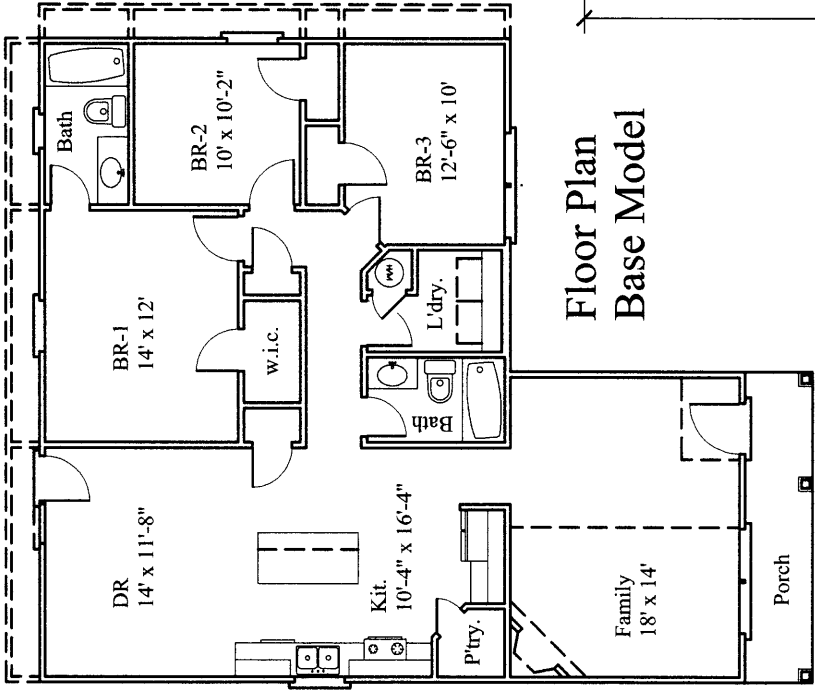
* See SELECTION/OPTION SHEET for all available options and pricing

For Information, Call **Worley Builders, Inc., Realtors®**
(865) 922-2600

Visit Online: www.worleybuildersinc.com

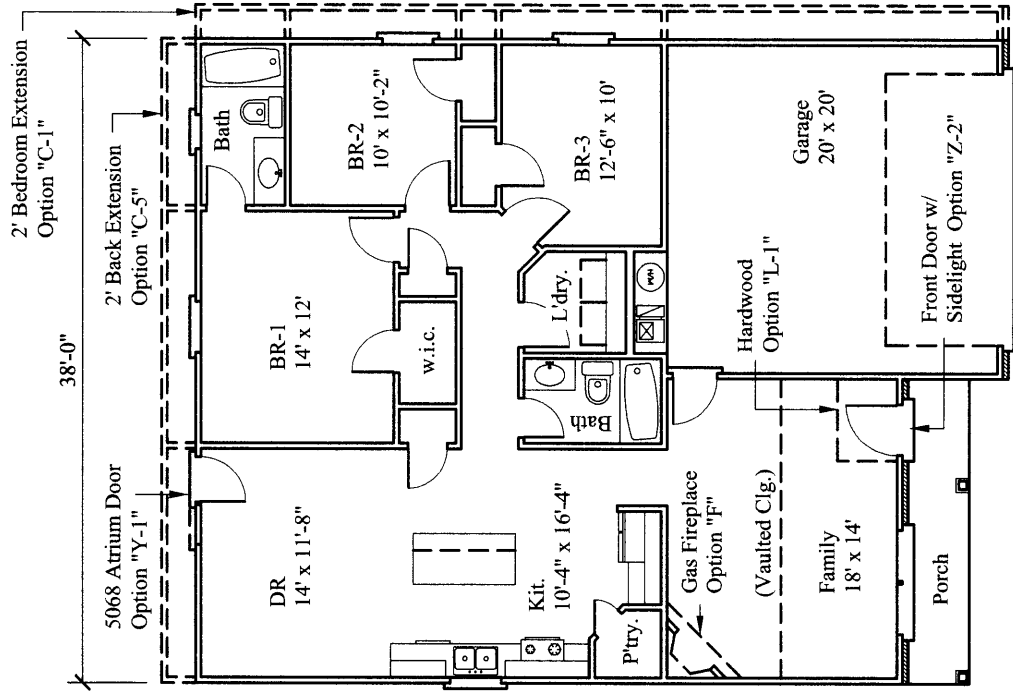


The Brentwood



**Floor Plan
Base Model**

Base Model Includes:
 Three-Bedrooms, Two Baths
 1304 Sq. Ft. Living Area
 (Total Sq. Ft. May Increase w/ Options)



Floor Plan

Garage Model Includes:
 Three-Bedrooms, Two Baths
 1304 Sq. Ft. Living Area
 412 Sq. Ft. Garage Area
 1716 Sq. Total Sq. Ft.
 (May Increase w/ Options)

All dimensions are from outside framing to C/L of partitions -
 Actual dimensions may vary slightly from plans & models

* See SELECTION/OPTION SHEET for all available options and pricing

For Information, Call **Worley Builders, Inc., Realtors®**
(865) 922-2600

Visit Online: www.worleybuildersinc.com