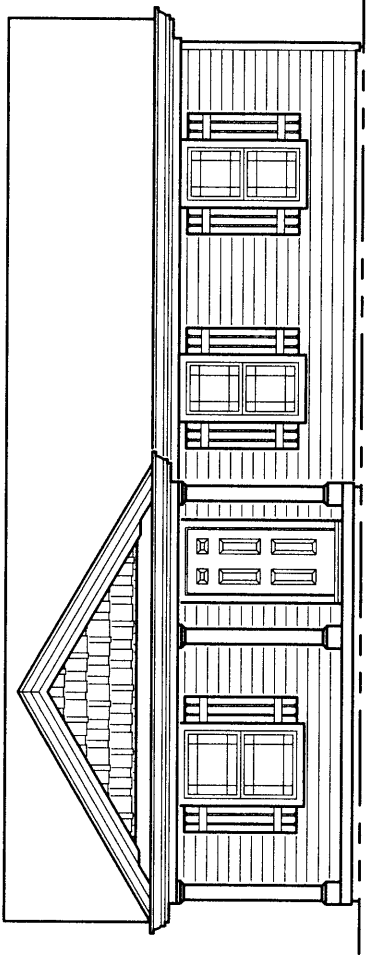




# The Evansbrooke

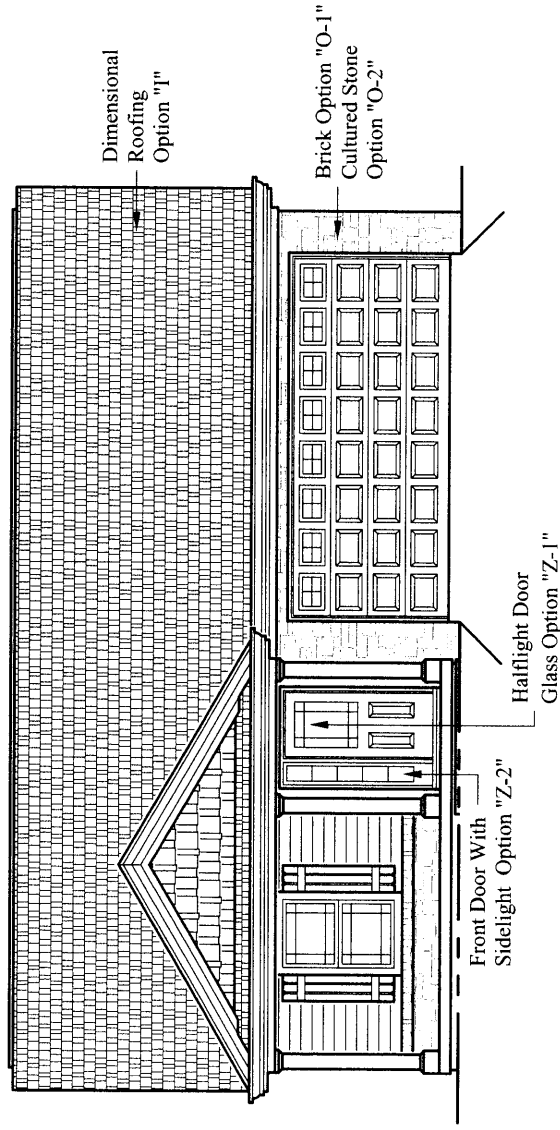
Base Model (Subject To Change) : \$133,900

\*\*Base Price Does Not Include Lot Premium\*\*



See Reverse Side for Floor Plans

EVANSBROOKE shown below with OPTIONAL FEATURES



\* See SELECTION/OPTION SHEET for all available options and pricing

For Information, Call **Worley Builders, Inc., Realtors®**  
**(865) 922-2600**

Visit Online: [www.worleybuildersinc.com](http://www.worleybuildersinc.com)

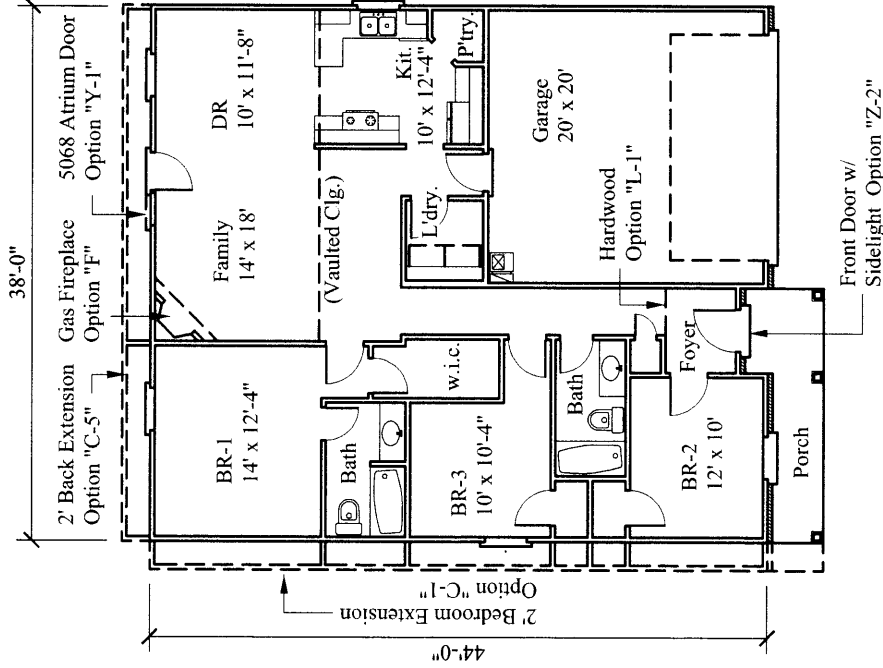


# The Evansbrooke

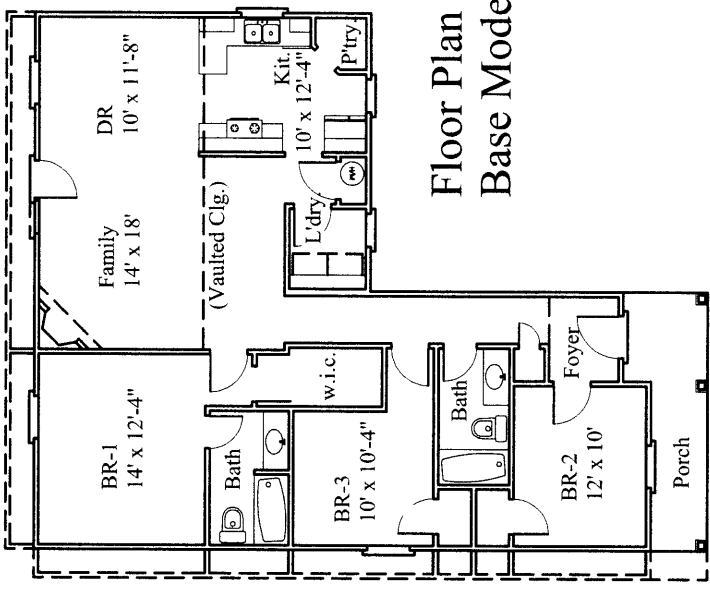


**Base Model Includes:**  
 Three-Bedrooms, Two Baths  
 1260 Sq. Ft. Living Area  
 (Total Sq. Ft. May Increase w/ Options)

## Floor Plan



## Floor Plan Base Model



**Garage Model Includes:**  
 Three-Bedrooms, Two Baths  
 1260 Sq. Ft. Living Area  
 400 Sq. Ft. Garage Area  
 1660 Sq. Total Sq. Ft. (May Increase w/ Options)

All dimensions are from outside framing to C/L of partitions -  
 Actual dimensions may vary slightly from plans & models

\* See SELECTION/OPTION SHEET for all available options and pricing

For Information, Call **Worley Builders, Inc., Realtors®**  
**(865) 922-2600**  
 Visit Online: [www.worleybuildersinc.com](http://www.worleybuildersinc.com)