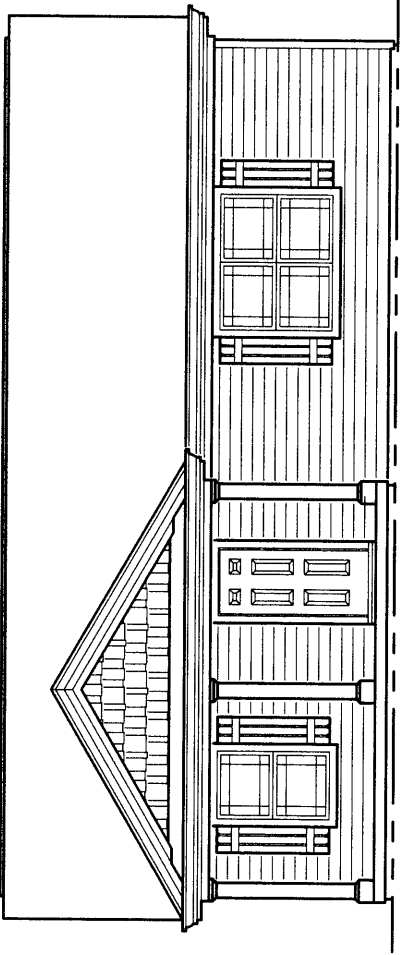




The Inverness

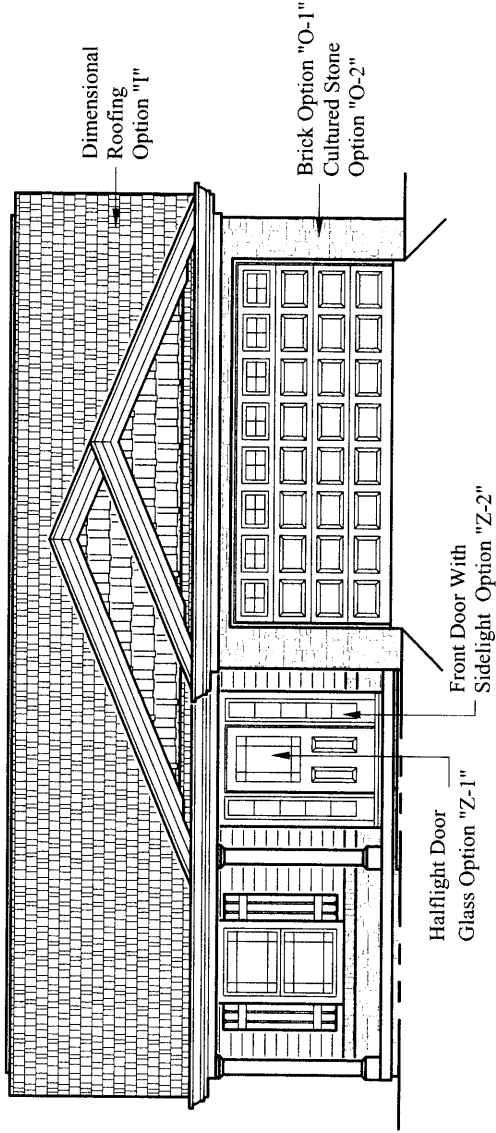
Base Model (Subject To Change) : \$125,900

Base Price Does Not Include Lot Premium



See Reverse Side for Floor Plans

INVERNESS shown below with OPTIONAL FEATURES



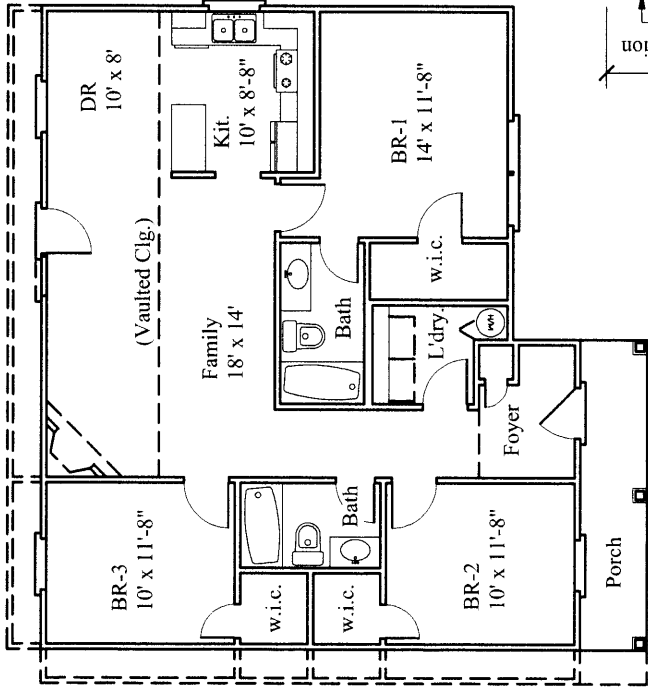
* See SELECTION/OPTION SHEET for all available options and pricing

For Information, Call **Worley Builders, Inc., Realtors®**
(865) 922-2600

Visit Online: www.worleybuildersinc.com



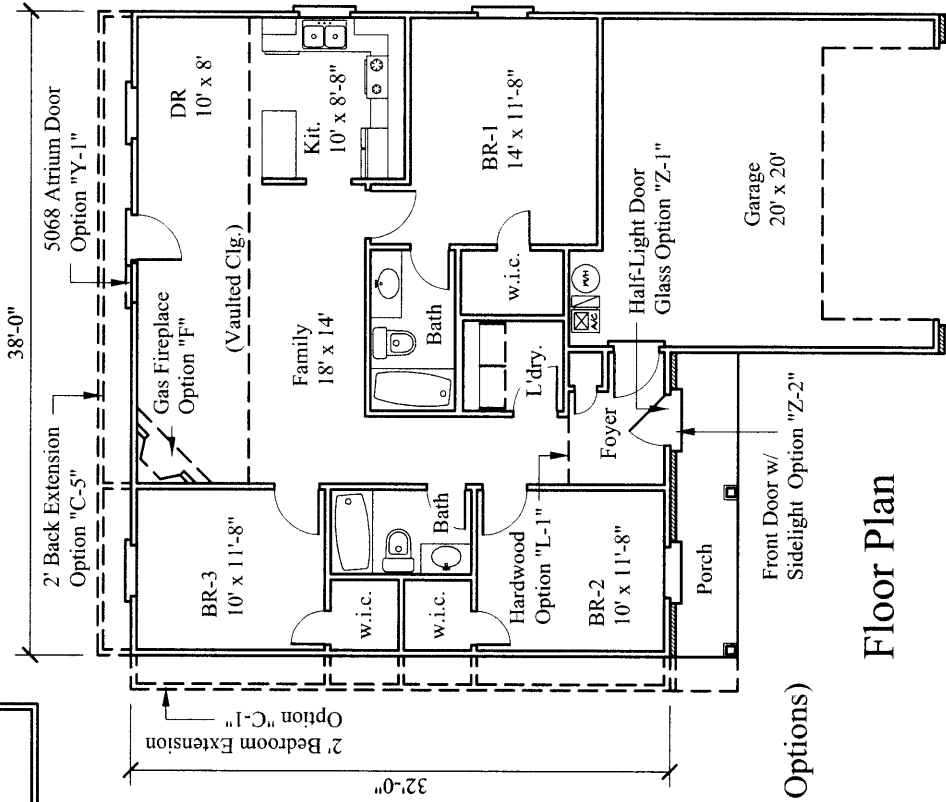
The Inverness



**Floor Plan
Base Model**

Base Model Includes:
Three-Bedrooms, Two Baths
1124 Sq. Ft. Living Area
412 Sq. Ft. Garage Area
1536 Sq. Ft. Total Sq. Ft. (May Increase w/ Options)

Base Model Includes:
Three-Bedrooms, Two Baths
1138 Sq. Ft. Living Area
(Total Sq. Ft. May Increase w/ Options)



Floor Plan

* See SELECTION/OPTION SHEET for all available options and pricing

For Information, Call **Worley Builders, Inc., Realtors®**
(865) 922-2600

Visit Online: www.worleybuildersinc.com