

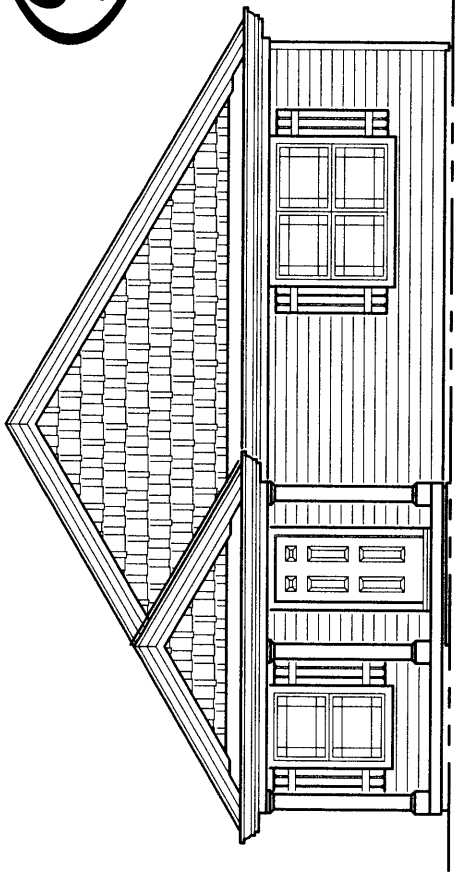


# The Wynstone

Base Model, No Garage (Subject To Change) : \$120,900

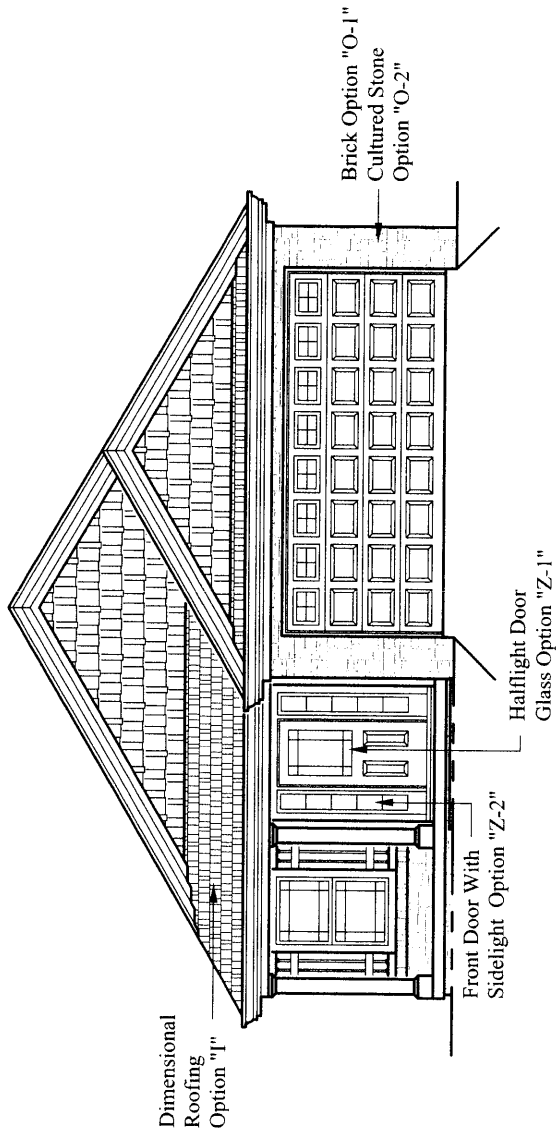


\*\*Base Price Does Not Include Lot Premium\*\*



See Reverse Side for Floor Plans

WYNSTONE shown below with OPTIONAL FEATURES



\* See SELECTION/OPTION SHEET for all available options and pricing

For Information, Call **Worley Builders, Inc., Realtors®**  
**(865) 922-2600**

Visit Online: [www.worleybuildersinc.com](http://www.worleybuildersinc.com)



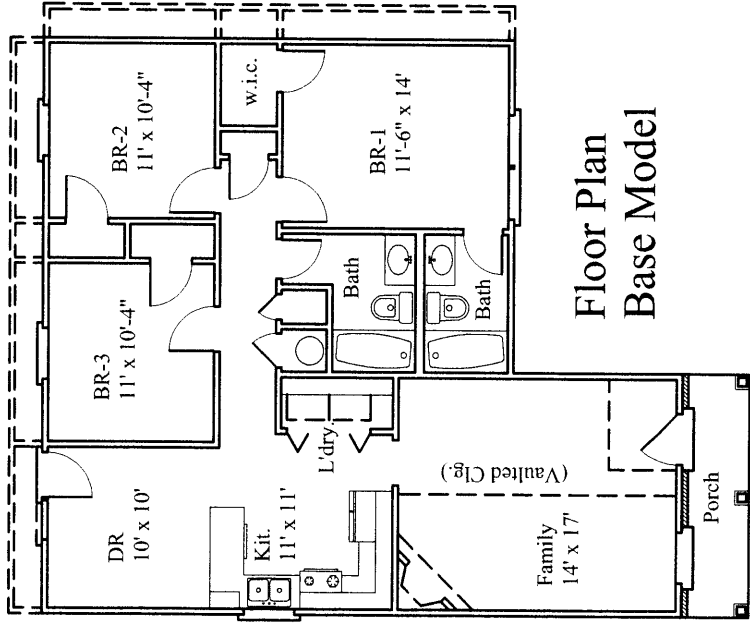
# The Wynstone



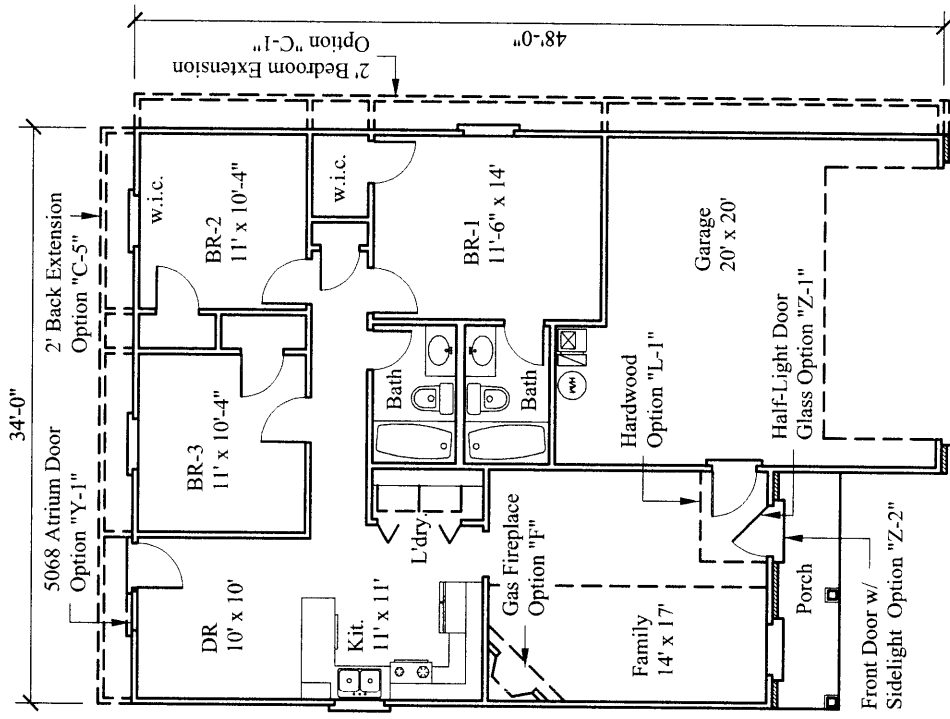
Base Model Includes:

Three-Bedrooms, Two Baths  
1092 Sq. Ft. Living Area

(Total Sq. Ft. May Increase w/ Options)



## Floor Plan



Garage Model Includes:

Three-Bedrooms, Two Baths  
1066 Sq. Ft. Living Area  
426 Sq. Ft. Garage Area

1492 Sq. Ft. Total  
(May Increase w/ Options)

All dimensions are from outside framing to C/L of partitions - Actual dimensions may vary slightly from plans & models

\* See SELECTION/OPTION SHEET for all available options and pricing

For Information, Call **Worley Builders, Inc., Realtors®**  
**(865) 922-2600**

Visit Online: [www.worleybuildersinc.com](http://www.worleybuildersinc.com)