

# TRANSPORTATION UPDATE

From: Terry Whiteside

Date: March 11, 2015

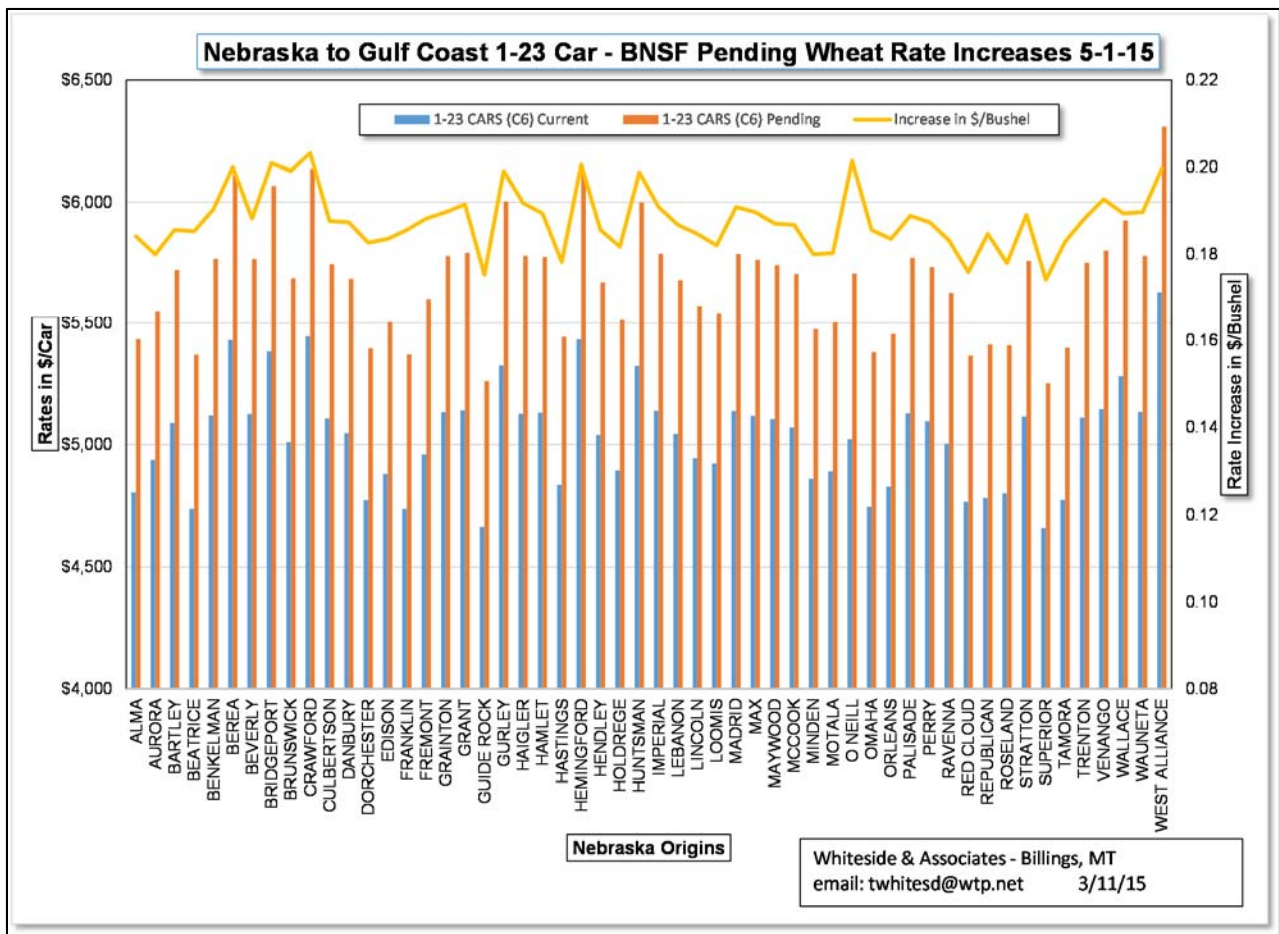


## SUMMARY OF BNSF FREIGHT RATE INCREASES THAT ARE SCHEDULED FOR MAY 1, 2015

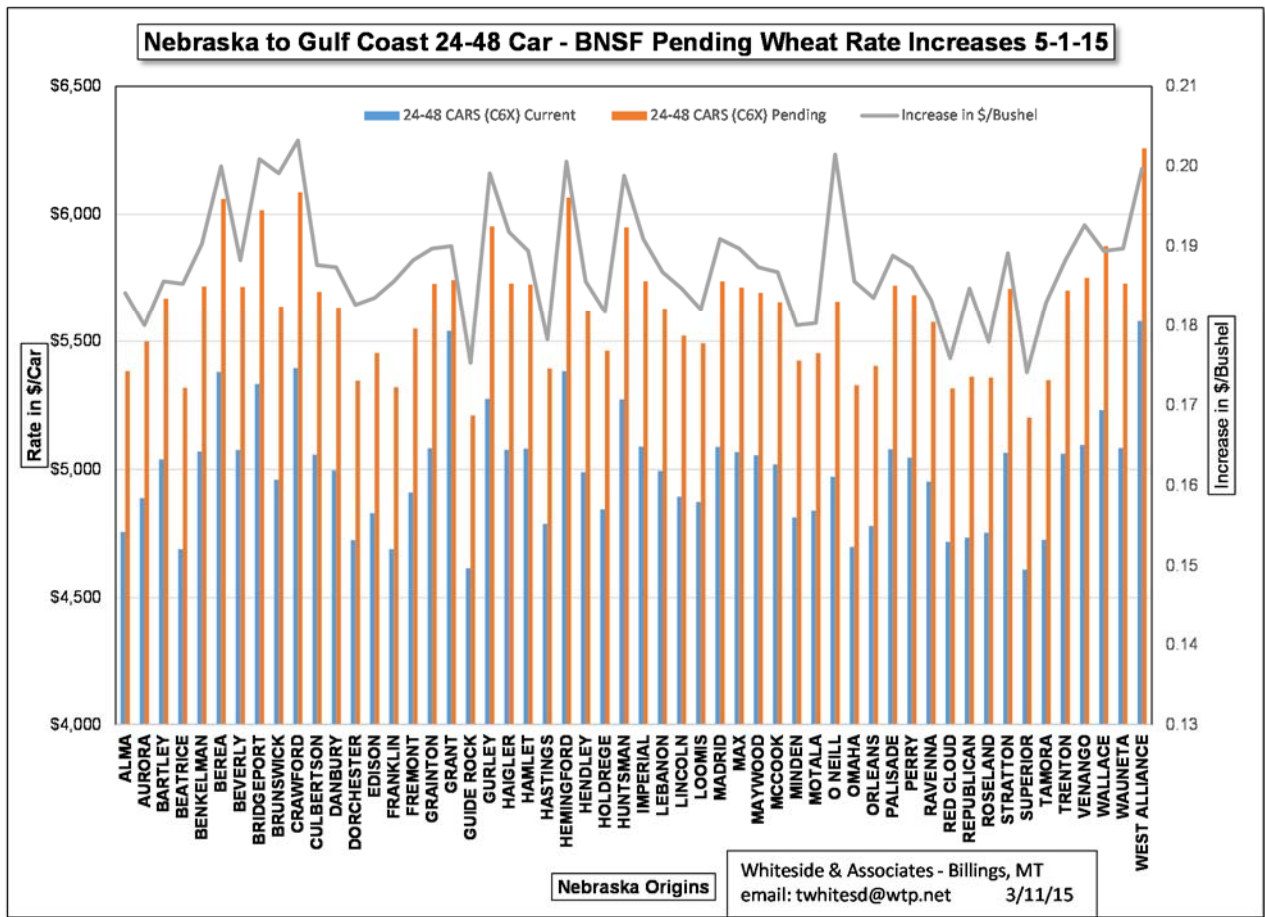
While the BNSF has not published all of the anticipated increases, a number of them have been noticed in the pending BNSF files. Caution should be taken in viewing these numbers, as they are subject change before they are put into effect, however it is evident that the railroad is looking at major increases into the PNW and Gulf Coast markets.

In the coming days, we will continue to publish more charts on proposed increases by individual states. On March 9, 2015 we published the rate and proposed increases from MT to the PNW and from CO to the Gulf. If you need another copy of that report, just drop us a note.

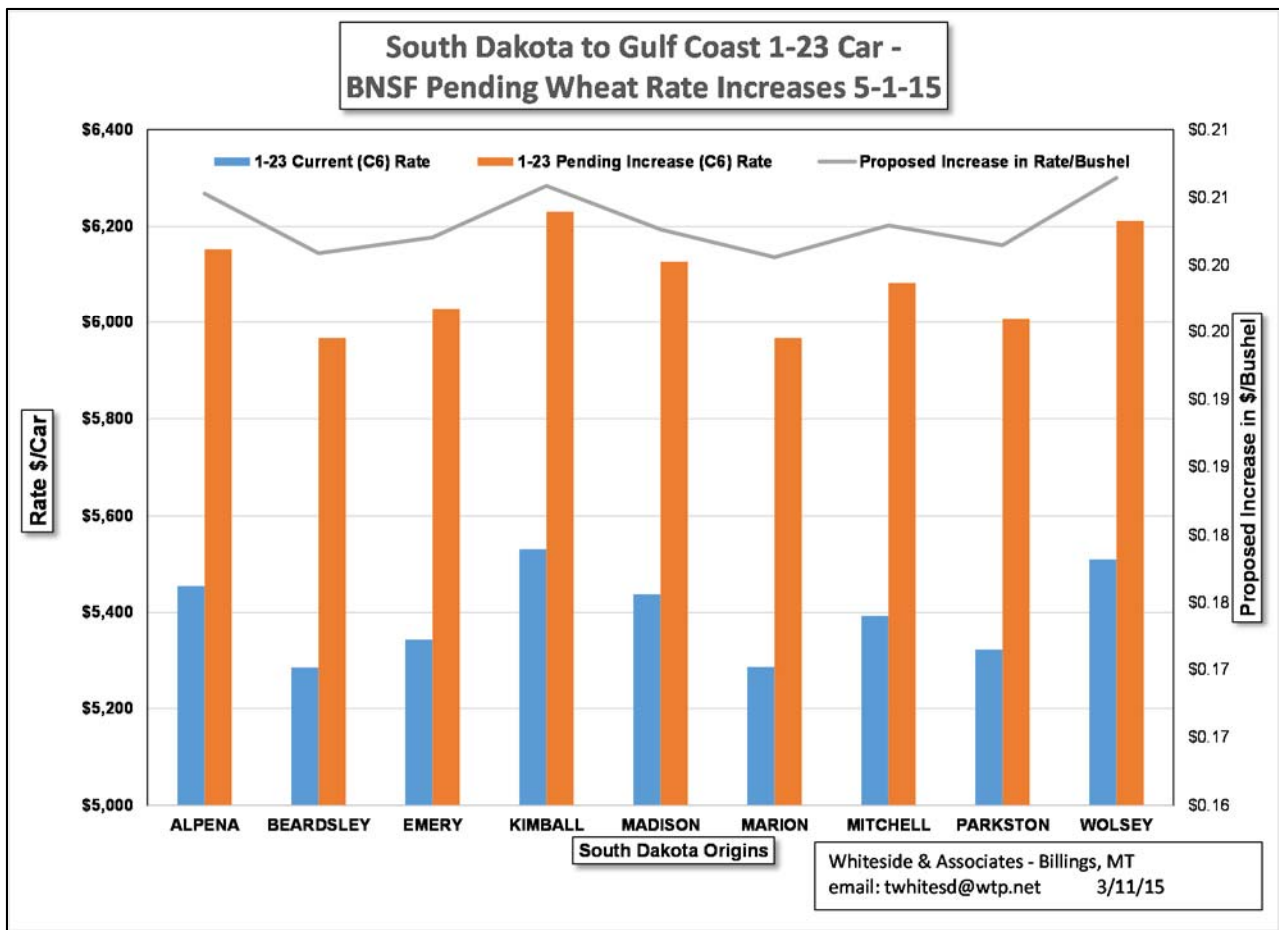
Today, we will examine SD to the Gulf Coast and NE to the Gulf Coast



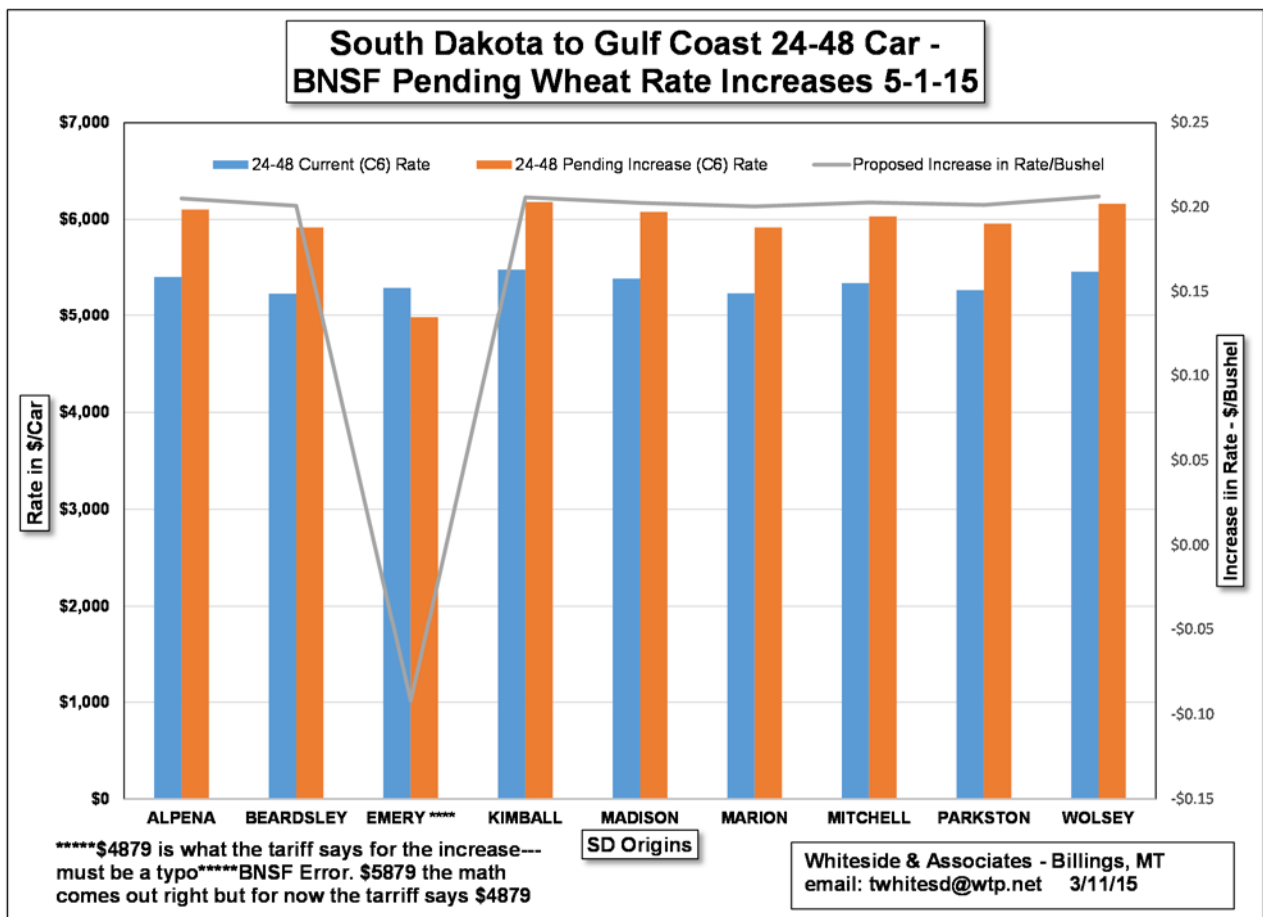
The Nebraska movements to the Gulf Coast are scheduled for rate increase of generally 18¢ - 20¢ per bushel effective 5-1-15. The Nebraska rates have been published in the pending file and they are outlined above.



The NE to Gulf Coast increases have been published and they are reflected above for the 24-48 car levels.



Above, the proposed SD to Gulf Coast increase in rates for the 1-23 cars are published in the C6 (286,000 #) cars.

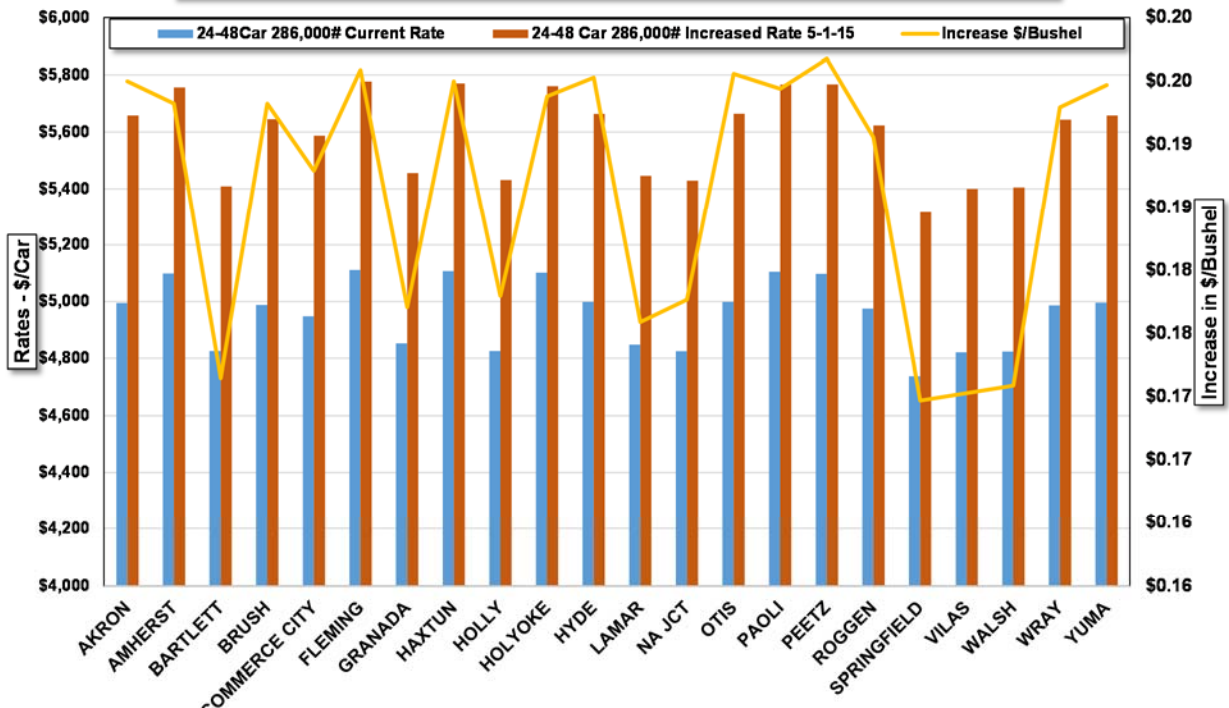


Above, the proposed SD to Gulf Coast increase in rates for the 24-48 cars are published in the C6 (286,000 #) cars.

Please Note: The rates published from Emery, SD to Gulf Coast are probably published with an error. \*\*\*\*\$4879 is what the tariff says for the increase---must be a typo\*\*\*\*BNSF Error. \$5879 the math comes out right but for now the tarriff says \$4879

In the 3-09-15, we published the CO to Gulf Coast rates 24-48 car as C6X, the large covered hoppers – holding 286,000#. It should have been for 24-48 for the C6 – holding 268,000# cars. We have republished the corrected chart below.

**BNSF Proposed Freight Rate Increase CO to Gulf Coast  
Tentative Effective Date 5/1/15 - 24-48 Cars 268,000#**



**CO Origins**

Whiteside & Associates, Billings, MT  
email: [twhitesd@wtp.net](mailto:twhitesd@wtp.net) March 9, 2015