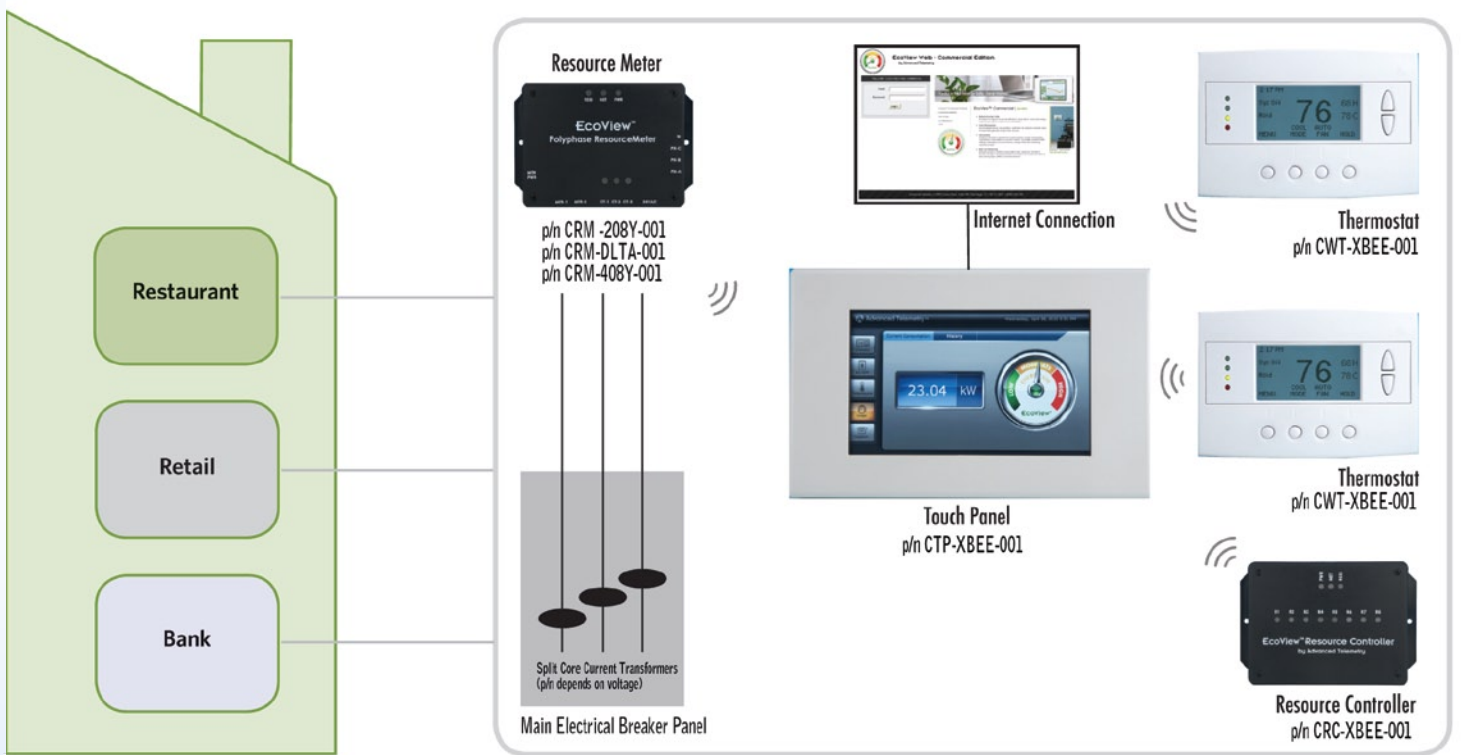




Energy Management System Reinvented

Energy consumption from commercial buildings is set to increase by 1.7 percent per year until 2025, and commercial buildings currently use 18% of the total energy consumed in the United States each year. These buildings represent a massive opportunity for energy efficiency and carbon reduction. Traditionally underserved by energy management system manufacturers, owners of small commercial facilities have for years been seeking a cost effective energy management system (EMS) solution.

Enter EcoView Commercial - the first energy management system designed especially for light commercial facilities enabling you to successfully enjoy your fair share of this \$6.8 billion annual market. Predictable, easy to install and feature rich, EcoView is a wireless EMS that provides a rapid payback to your customers through reduced energy bills. Dramatically boost your sales and profits today by offering the EcoView Commercial energy management system to your customers.



Key benefits:

- ✓ An affordable EMS system to track, manage and control, in real time, consumption of electricity, and other energy loads in a building
- ✓ Remote monitoring and control capability of all large and small energy loads such as HVAC systems and more
- ✓ Easy and fast installation with drop in thermostats requiring no new wiring
- ✓ Remote monitoring of multiple sites via web, transforming HVAC contractor from reactive 'fixer' status to a proactive solution provider to client
- ✓ Access to an underserved market including restaurants, medical offices, retail shops, bank branches and other small commercial facilities largely ignored by large control companies
- ✓ A truly scalable and predictable solution for a sector where managing rising energy costs makes a significant impact on narrow profit margins
- ✓ Increased visibility with client; staying top of mind with a wider service offering enabling more frequent visits to client sites
- ✓ An EMS system that does not require integration with a utility company or need monitoring by on-site personnel



Energy Management System

Features and Benefits:

Touch Panel

- ✓ 7 inch touch panel gateway to the internet, enabling wireless control of thermostats, power meters and other load control devices
- ✓ Installs on any wall using single Ethernet cable to provide power and access to the internet
- ✓ Group control and monitoring functions performed by touch screen
- ✓ Real-time and historical data dashboard displayed in powerful colorful visual graphics
- ✓ All firmware and user interface upgrades are delivered seamlessly over the Internet
- ✓ Touchscreen can also receive and display text-based messages, which can be created via the EcoView Web application

Resource Manager (Thermostat)

- ✓ Drop in replacement that communicates wirelessly, enables functionality not possible with standard 24V HVAC thermostats
- ✓ Advanced, energy-saving control algorithms that maximize savings and performance
- ✓ Control local set points and make adjustments within prescribed limits
- ✓ Auxiliary temperature sensor input available to monitor temperatures within refrigeration units

Resource Meter

- ✓ Measures real-time energy demand as well as historical consumption
- ✓ Updates delivered to touch screen on fifteen-second intervals and reported to the Internet via the EcoView Web application
- ✓ Split-core current transformers eliminates need to shut off power mains during installation
- ✓ Available in single-phase and three-phase models for both Residential and Commercial applications

Resource Controller

- ✓ An eight-channel, pilot-duty controller module to manage lighting, ventilation and any energy-consuming electrical load that would benefit from scheduling
- ✓ Access relay channels via the touch screen or remotely through the EcoView Web

Available at authorized EcoView Commercial Distributors Nationwide

MOTOR DYNAMICS of TENNESSEE, LLC
242 WEST MAIN STREET
PMB#137
HENDERSONVILLE, TENNESSEE 37075
www.motordynamicsltd.com
mike@motordynamicsltd.com
TEL: 615.346.9163
FAX: 615.246.3900