

# HOW SHUZI WORKS

## NANO VIBRATIONAL TECHNOLOGY

Shuzi products operate using the latest in subtle energy technology called Nano Vibrational Technology (NVT). Each piece is embedded with an NVT chip, made of a specially selected non-magnetic material, chosen for its lattice structure and atomic properties. The raw material then goes through a special processing sequence. This material must meet our strict criteria, which includes a specific size, shape and weight. Once the material meets our specifications, a thin film deposit is applied, at which point, the programming phase takes place. This is when the NVT is actually programmed into the chip.

The programming phase uses techniques which are derived from the principles of electro migration and scalar induction to shape the material's nanostructure and form "statistical tuning circuits". The best example for statistical tuning circuits would be the ferromagnetic material, iron. Ferromagnetic material does not exhibit the properties of magnetism until it is itself magnetized by a magnetic source, meaning that the individual dipoles in the material are not aligned until it is forced by an external source such as a magnet. The strength of the retained magnetization is an effect of how many dipoles stay in the newly aligned position.

This programming creates multiple identical tuning forks that emit their own frequency. Compare one singer versus a choir singing the same note. The combination of all the identical forks creates a subtle vibrational energy, effective enough that it interacts with the biofield of humans. The NVT chip is programmed to emit not just one, but many unique frequencies chosen to be compatible with human cells, and is effective only when it comes in contact with the biofield, usually within 6 inches of the skin.

Simply put, Shuzi products are programmed to resonate with your body's own natural frequency, providing a stronger signal to help you function more efficiently. It's like pushing a child on a swing – if you don't hit that certain tempo, you won't get the swing to go any higher. Shuzi helps you hit your stride.

## WHAT IS THE BIOFIELD?

In 1994, the US National Institutes of Health (NIH) established the term "biofield." The biofield is an ensemble of different energies that extend outward from each person's body. These energies regulate and balance multiple systems that range from cellular to the body as a whole, ensuring the harmonious performance necessary for well-being.

One of the key functions of the biofield is to strengthen your ability to cope with stress. You need to be able to adapt to stress in a positive way, or it will have very negative consequences on your performance and well-being.

Physical, emotional, mental and environmental stress can rupture the integrity of your biofield. The weaker your biofield, the less capable it is of resisting stress, seriously compromising your ability to function. Think of a strong, resilient biofield as a protective force field surrounding you in a stressed-out world.

## WHAT DOES SHUZI DO?

Shuzi strengthens and fine-tunes the human biofield, making your mind and body more resistant to the effects of stress in any form, including electromagnetic fields (EMF), harmful emissions radiating from electronic equipment such as cell phones, computers and hair dryers.

Electromagnetic fields can stress the body in several ways, such as affecting your heart rate, disrupting your brain activity during sleep and even reducing your body's production of melatonin, thereby diminishing your resistance to cancers.

Shuzi uses subtle vibration programmed at the nano-level to create a stronger frequency for your biofield and those cells of which it is comprised, enabling your body to more capably resist the effects of any stress it's sub-



jected to. Your body can reset and self-correct more quickly and easily. Cells communicate with each other by known methods of chemical reactions and through the biofield. They have a resonating frequency at which they operate in order to stay healthy, but these cells are affected by outside electric and magnetic environmental conditions. Subtle vibration can reinforce a cell's natural frequency to override outside environmental influences, which cause cells to communicate better.

This is important because when cells lose the ability to communicate with other cells, they become isolated and confused. It has been theorized that cancer or tumor cells are isolated cells that have lost their ability to communicate. Shuzi helps the cells stay in communication. It reinforces their natural frequencies, keeping them strong and in sync.

You will notice enhanced energy and strength, greater endurance and flexibility, and better balance and mental focus.

## SCIENTIFICALLY PROVEN

BioMeridian is the world's largest manufacturer of Meridian Stress Assessment instrumentation, FDA-registered medical diagnostic equipment used by doctors and health practitioners around the world to assess functional health. These machines measure stress and energy levels in the human body. Upon completion of BioMeridian testing, Shuzi was proven to effectively lower and balance stress levels in the human body.

# SHUZI RESEARCH



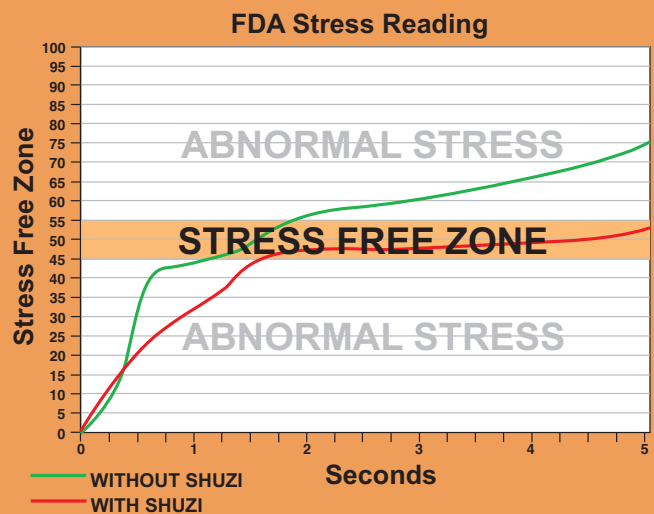
**B**ioMeridian is the world's largest manufacturer of FDA-registered Meridian Stress Assessment instrumentation, medical diagnostic equipment used by doctors and health practitioners around the world to assess functional health.

The BioMeridian MSA-21 measures stress in up to 60 different parts of the human body. It is currently used by over 1500 physicians in the United States and in countries around the world to measure resistance to stress in essential bio-systems throughout the body.

Subjects were tested in each of the 60 areas of the human biofield and measured on a data output scale of 0 to 100. The ideal target zone falls within the score range of 45 to 55, while any measurement above 55 indicates the presence of stress, as it denotes excess energy, or an inflamed condition in that part of the biofield. Any measurement below 45 is also a sign of stress, because lower numbers indicate that the energy systems are impaired, weakened or blocked. The closer the measurements are to 50, the closer the subject is to being in his ideal performance zone, making him better able to cope with the effects of stress.

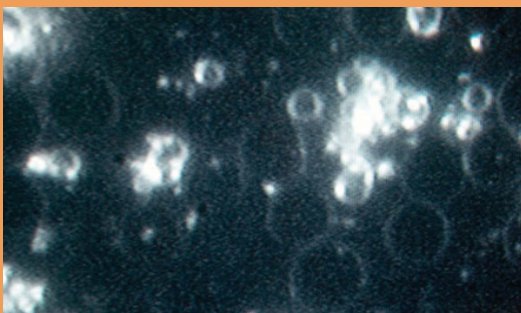
Subjects were first tested without Shuzi, at which point each stress score was recorded. Afterward, each subject was tested wearing Shuzi, and scores were again recorded, showing a very notable positive difference between the first and second test in nine out of 10 subjects.

BioMeridian's testing scientifically demonstrated the immediate efficacy of Shuzi's Nano Vibrational Technology and its ability to lower stress levels in the human body, as well as balance the biofield.



## MICROSCOPY BLOOD TESTS WEARING A SHUZI BRACELET

Without  
a Shuzi  
Bracelet



After 20  
Minutes of  
Wearing  
a Shuzi  
Bracelet

