

HOW TO LICENSE YOUR PROGRAM



There is a 7-day trial of Ord Volume after which you need to license the program if you have purchased it. We first need you to email us the hardware id for your installation or Ord Volume Chart. This number is at the top of the license window when you start Ord Volume Charts.

Ord Volume Licensing Dialog

2 of 7 days left in your trial period

Your Hardware ID is: Copy The Hardware ID to the Clipboard!

If you see this message it's because your license period has expired, the license has been deleted, you have just upgraded to this version, or you are evaluating Ord Volume using the trial. This new license format is to be compatible aggressive virus protection and 64 bit versions.

If you have purchased Ord Volume Charts contact DW.Volume@Gmail.com (<mailto:DW.Volume@Gmail.com>) with your name, phone number, and the hardware id at the top of this window. You will receive a reply with instructions on how to install your new license.

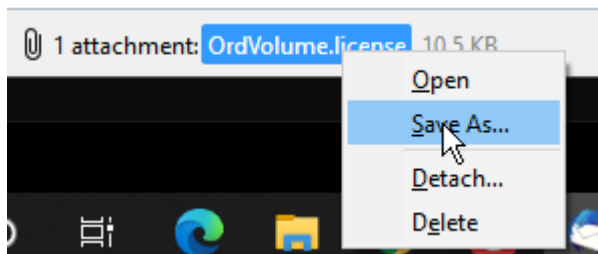
If you are in the trial period, just click "Continue Trial" to use the remainder of your trial period or "Exit Program" if your trial has expired.

I

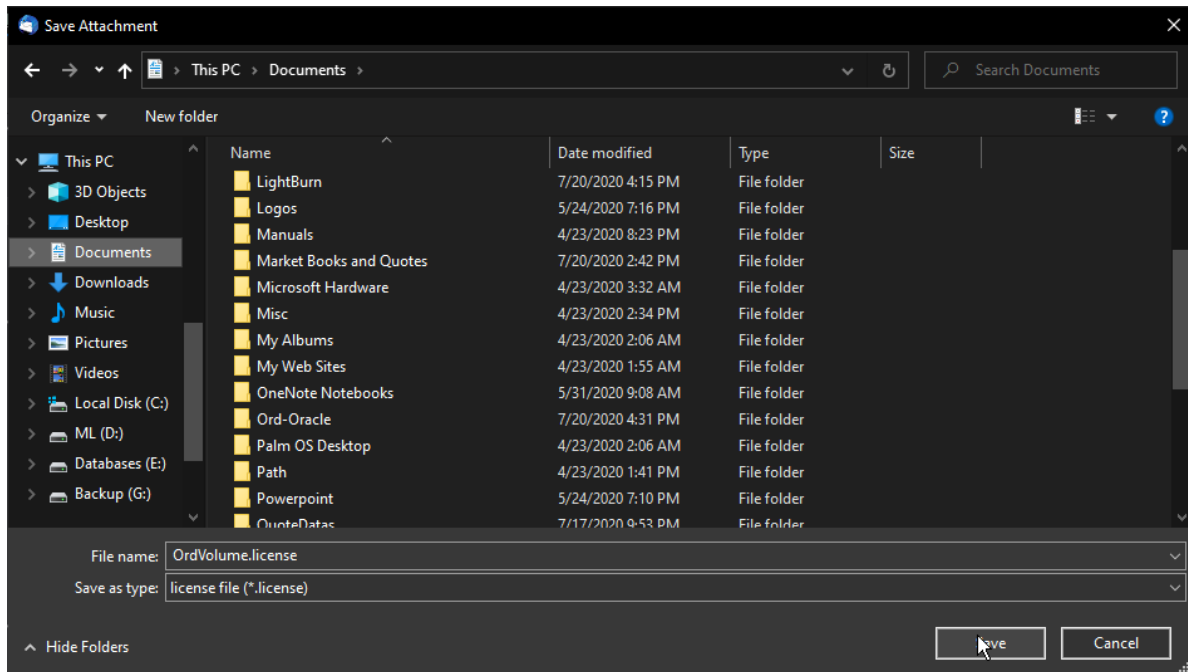
Continue Trial Buy Ord Volume License Info Exit Program

Once you have copied the hardware id to the clipboard you can paste in an email by using control-v in the body of that email and then send that with your name and phone number to DW.Volume@gmail.com

You will then receive back via email with an attachment named "OrdVolume.license". Save that file to your documents folder somewhere where you can find it.

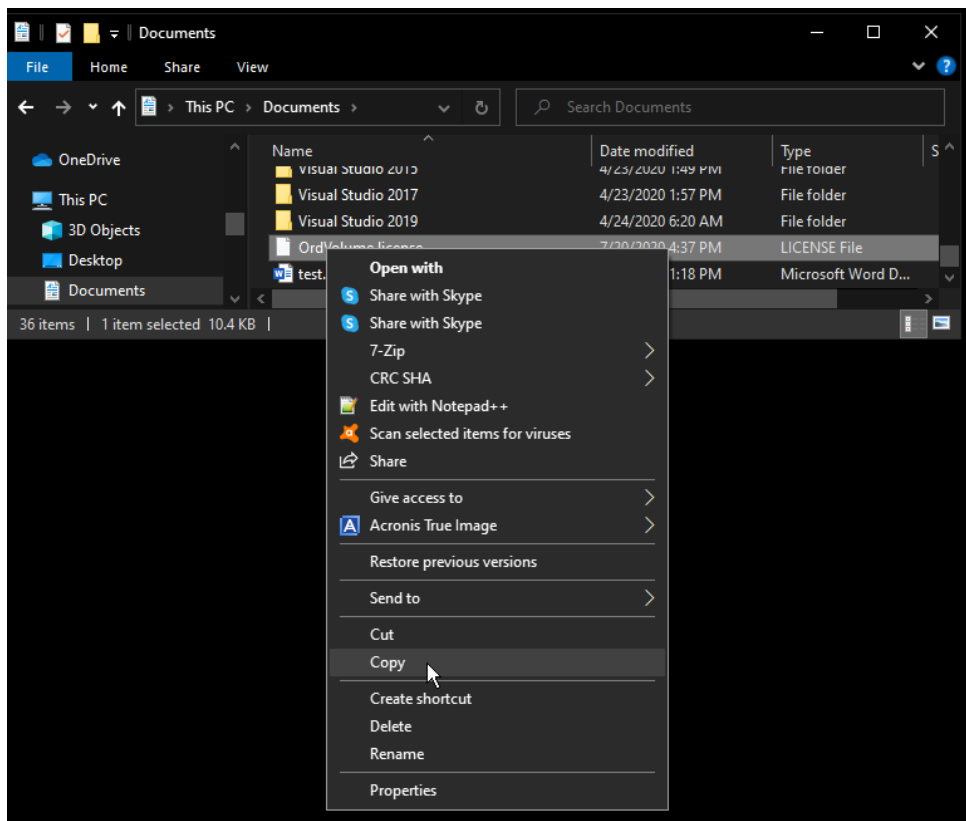


If you are using outlook or a web-based email client, this might look different but there will be an option to save the file attachment.



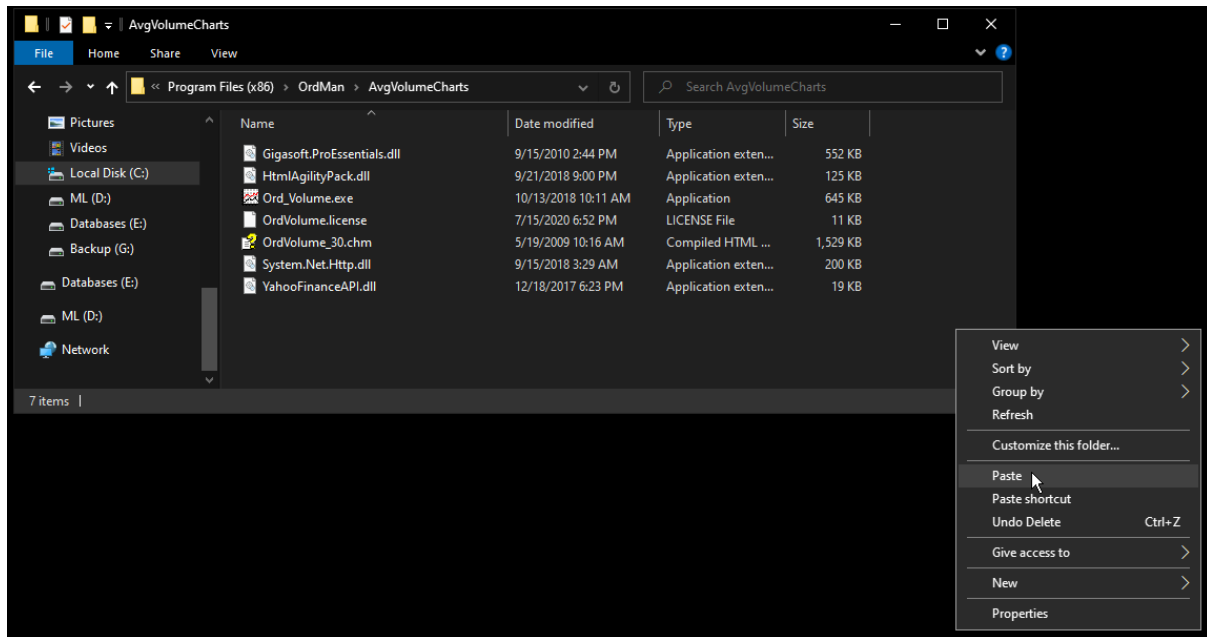
Open Windows Explorer and find the file you just saved.

Right click on it and select copy.



Then navigate to the “C:\Program Files (x86)\OrdMan\AvgVolumeCharts” folder. Right click in the window where a file name does not exist and select paste.

If you are running a 32-bit version of windows the file path will be “C:\Program Files\OrdMan\AvgVolumeCharts”



You should now see the license file in the listing and be good to go.

Any issues please contact technical support at DW.Volume@google.com.