

# iWellness<sup>Exam</sup>

Your eyesight is priceless and we are here to protect it!

Vision threatening diseases such as glaucoma, macular degeneration and diabetic retinopathy often have no outward signs or symptoms in the early stages, so our practice has begun using state-of-the-art technology to assess the health of your eyes.

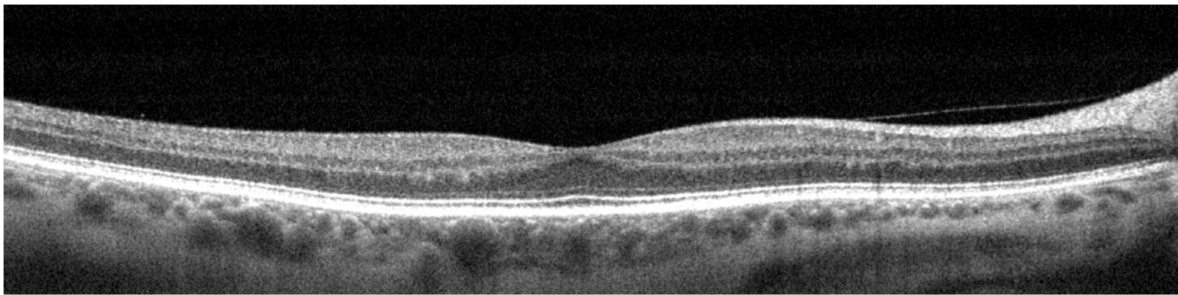
The iWellnessExam<sup>®</sup> is a quick, non-invasive scan that allows our doctors to see beneath the surface of your retina. This unique technology can help our doctors detect vision threatening and systemic diseases in their very early stages, when they are most treatable.

As part of your pre-exam testing, our technician will perform the iWellnessExam which your doctor will review with you during your examination today. The \$39 charge is typically not covered by your vision or medical insurance, so this will be added into the cost of your visit today. Any questions you have about iWellnessExam and the results of the test can be discussed with the doctor during your examination.

Thank you for choosing our practice to protect the health of your eyes!

**iWellnessExam examples:**

**Healthy Retina**



**Unhealthy Retina**

