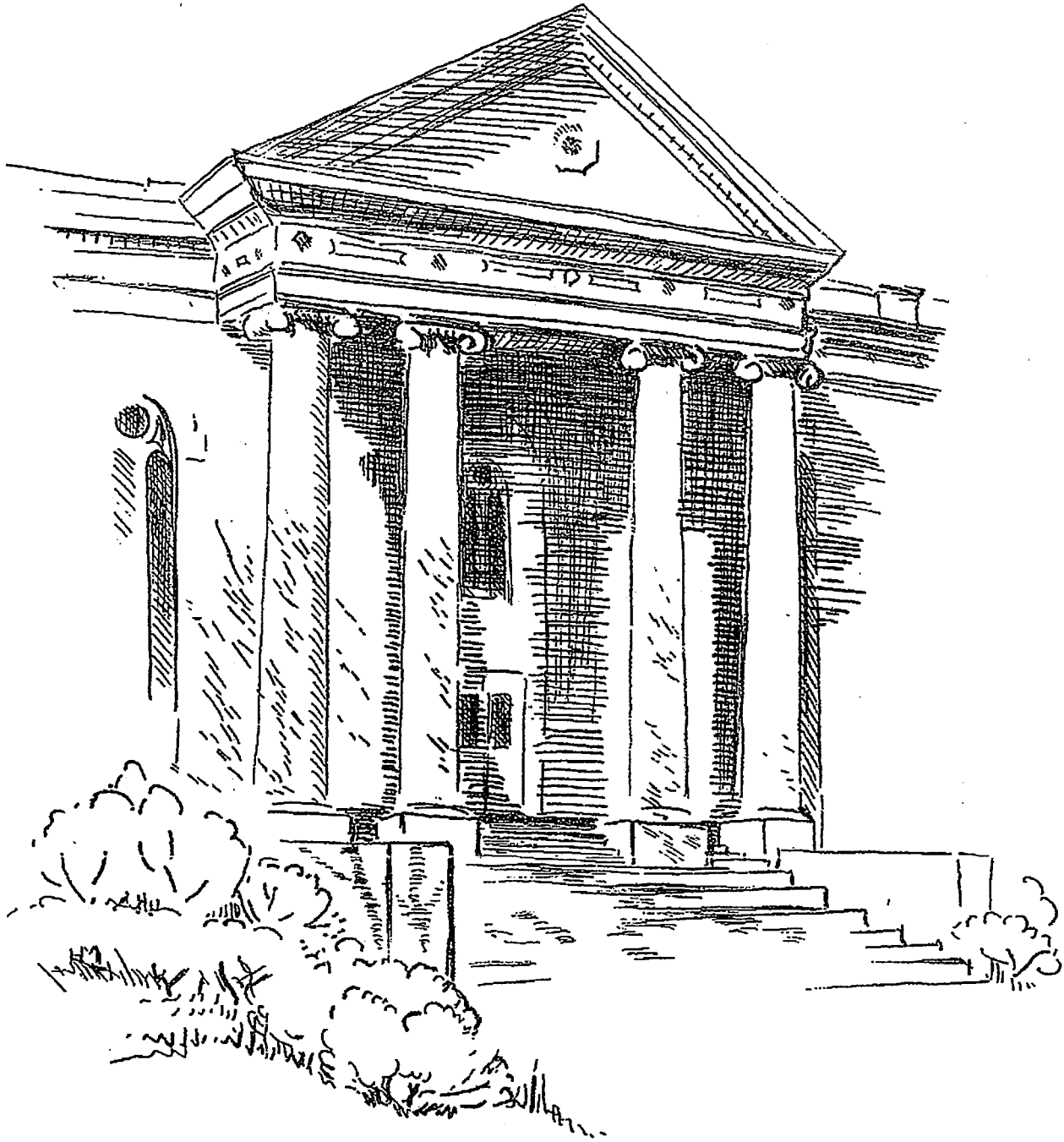


January 24, 2021

Annual Congregational Meeting



2020 Annual Report

In memory of those who entered the Church Triumphant in 2020

BEVERLY BREEN

AUGUST 25, 1929—JANUARY 31, 2020

GERALD REED

OCTOBER 24, 1930—MAY 7, 2020

JOHN MCCUE

DECEMBER 2, 1932—JULY 23, 2020

WILLIAM SHAY

APRIL 18, 1944—OCTOBER 10, 2020

NADINE BRILL

MAY 27, 1929—OCTOBER 28, 2020

SUE KLINE

JUNE 19, 1939—DECEMBER 29, 2020

Table of Contents

ADMINISTRATIVE REPORTS

2019 ANNUAL MEETING MINUTES	4
CLERK'S REPORT	6

TEAM REPORTS

PRESBYTERIAN WOMEN REPORT	7
PROPERTY REPORT	8
CHURCH FAMILY LIFE REPORT	9
MISSION REPORT	10
WORSHIP & MUSIC REPORT	12
CHANCEL BELL CHOIR REPORT	13
ADULT CHOIR REPORT	13
STEWARDSHIP REPORT	13
CHRISTIAN EDUCATION REPORT	14
MEMBERSHIP	14

FINANCIAL REPORTS

DEACONS TREASURER'S REPORT	15
PRESBYTERIAN WOMEN TREASURER'S REPORT	16
TREASURER'S REPORT	17

Annual Congregational Meeting

Park Presbyterian Church

January 26, 2020

Started at 11:32 PM

Called meeting to order-Pastor Christopher Mergener

Determination of Quorum- 10% of Active Membership Rolls is ~15 people, approx. 50 members were present

Opening Prayer/Welcome-Christopher Mergener

Reading of Minutes from 2019 Annual Meeting/ Approval of Minutes

MOTION: Sarah Humphrey/Joan Boerman(2nd) approved minutes from 2019 Annual Meeting (passed)

MOTION: Deb Compher/Cindy Best (2nd) approve agenda for Annual Congregational Meeting January 26, 2020 (passed)

Clerks Report- Cari Taylor-

Elders- Cari Taylor (Clerk of Session) Scott Blondell, Paul Salisbury, Dale Groover, Cheryl Lotz, Deb Compher, and Bob Hanson

Pastor's Report- Rev. Christopher Mergener

Pastor Contract- Cindy Best- spoke about Pastoral Contract during Personnel Report

Team Reports:

Christian Education- Paul Salisbury- children's program was gone this year because we did not have participation and a Christian Ed leader. In time hope we can bring back a program.

Church Family Life- Cheryl Lotz- thanked members with help in organizing and implementing activities for the church.

Deacons- Karen Watson- members are Judy Leone, Karen Watson, Ellie Foote, Deb McCrossen, Sue Rowe, Carol Thurston, Natalie Lemmon, Anne Rogers, McKenna Briggs.

Finance- Dale Groover- pledges are at ~\$82,000. Comment about not being able to rely on the stock market to help bump our accounts back where they should be. How are we covering for budget deficits? We draw from the Endowment. As a church in better standing than in past years. Dale explained that standard practice is to draw from the Endowment not the Principle, should not go over 5%. We set a figure of \$60,000 last few years. We drew \$120,000 this year. Stocks will also recede in this next year. When we start drawing from Principal then we will have limited time of church being viable. Please throw out your old envelopes, we assign new ones every year.

Stewardship/Membership- Paul Salisbury-received 56 pledges in our church- this does not include non-

pledging members that give. This is what affects the budget. Pledging is a personal choice, not a requirement.

Mission- Deb Compher- Thanked team. Anne Rogers mentioned that for Family Promise need Park Church members when we have our rotation (8PM-7AM)(this is in insurance policy, not session decision). Family Promise has a house in Lyons now, will make an excellent place for families but per zoning laws can only have for 12 weeks. They only have 10 churches need 13.

Personnel- Cindy Best-Pastoral Contract is the same as last year except all employees get Cost of Living raise. We do not have to increase but if we want to keep our employees it is in our best practice to do it.

Presbyterian Women- Mary Cree/Deb Compher- we do activities involved in the church to raise funds for church/mission (examples Ladies Tea-reach out to community and build relationships with the women of the church)

Property- Scott Blondell- Thank you to Rick Bald for taking the lead on the beam/roof project. Possibly a February start date. Thanks to Ed Lotz and Paul Salisbury for coming to meetings and working hard at securing an attorney for this major project.

Worship/Music- Bob Hanson- Finding pulpit supply is the most difficult. Added some Special music this past year at holidays. Thanks to Yoshiko, Sarah and Natalie for blending talents and being flexible in adding different things to enhance worship experience.

Nominating Team-Bob Hanson

Slate:

Members going off of Deacons are: Anne Rogers, McKenna Briggs and Karen Watson

Deacon Gil Burgess 2022

Deacon Holly Burgess 2022

Deacon Steve Mitchell 2023

Members going off of session are: Deb Compher and Bob Hanson

Session Karen Cameron 2023

Session Sandi Marcano 2023

Asked if any nominations from the floor/ hearing none it went to a vote. All Deacons and Session Elders were recognized for their service. Those coming on to session should ask those going off to continue to be part of committee.

MOTION: Paul Salisbury/Dale Groover (2nd) to approve the slate for Deacons and Session Elders (passed)

Motion to Adjourn Natalie Lemmon/Ellie Foote (2nd) (passed) at 12:17PM

Ending Prayer: Reverend Christopher Mergener

CLERK'S REPORT

CARI TAYLOR, CLERK OF SESSION

Wow, 2020 what a year it has been!

We began our year with 2 new members to session Sandi Marcano and Karen Cameron. In February the Property team began tackling the daunting task of getting our broken beam and roof repaired. We began out the year talking about "how do we GROW our church?" This meant potentially making some changes. We started discussions around the Matthew 25 initiative and looking into ways we could incorporate small changes to help our church connect with the community.

At that time who knew that our last official in person session meeting would be on February 19, 2020. Between Feb and March 26th we were hit with the reality of COVID. On March 26, 2020 we had our first ever ZOOM meeting and have not looked back since. Church as we used to know it had changed. We have adapted to new technology not only for meetings but also in our sanctuary. We added cameras so that J. could Facebook LIVE our services on Sunday mornings, Yoshiko and Sarah have been prerecording music for service also.

We were at the mercy of the Governor and his guidelines. It was unknown at the time how long we would operate in this unique situation. We had to adapt everything we have ever done and think outside the box. If we were to get back to our "home" we would need to put precautions in place (such as sanitizer stations, shields, contact logs, etc.) It was amazing at how quickly these things became common practice. How would our members "Give?" We adapted our website and offered a way to give electronically, and members could still mail in if they chose. We prayed for those who were not able to be connected with us and missed them.

In April our beam was back in place and the long task of cleaning and cosmetic repairs began. We were given the OK to be back in the building safely, except we still had the whole issue of COVID. There was much discussion and discerning about the rummage sale and our BBQ fundraiser. We decided that they would have to wait so we could all be safe. Our meeting in May was a time for thinking about how to reopen our doors. We had many discussions about what safe-

ty measures would have to be in place, and how to get the congregation to adhere to them. These talks went on for a couple months. Just when we thought it may be safe the numbers would rise. There were many hours collecting supplies, researching best practices and putting stations and signs in place in preparing to reopen. We decided that on October 4th World Communion Sunday would be our "soft opening." Communion would be served in individual packets that were picked up prior to entering church. All members had to sign the contact log and sanitizing stations were placed throughout the lounge and going into sanctuary. It was so wonderful to be back in the building, seeing our friends in the pews (six feet apart) and the sanctuary was "alive" with music again.

At our September meeting we gave the ok for the rummage sale to take place at the end of October with the guidelines in place. Unfortunately after one day we had someone come in our building that had tested positive and the rummage sale needed to be shut down. This also ended our time for worship in the church; we lasted 2 Sunday's.

On November 9th we held a special congregational meeting for the purpose of the dissolution of our pastoral relationship with Christopher. This came as a surprise to most of us. We were very sad to hear this news and wished him and Ron the best in their new adventures. With this major change and at such an important time of year this became quite the challenge for session. We were able to secure Reverend Carol Wilson for the whole Advent season which was a BLESSING!!

On December 30th we had our final session meeting for the year with our newly appointed moderator the Honorably Retired Reverend Dr. Betsey Crimmins and our Committee on Ministry Liaison Ken Allen. With their help and direction we are headed into a new year. With God's help all things are possible and session feels the same. HE will guide us into whatever the future holds for Park Church. Session wishes all the congregants of Park Church happiness and good health for 2021. May we work together to serve the people of our church and our community!

PRESBYTERIAN WOMEN

PPC COORDINATING TEAM: Co-Moderators: Deb Compher & Mary Cree; Secretary: Pat Hart; Treasurer: Ellie Foote; Corresponding Secretary: Gwen Mix; Celebration Giving: Deb Compher; Members-at-Large: Sue, Rowe, Ginnie Bodine, Natalie Lemmon, Cheryl Lotz, Christine Stephens (Bible Study Leader & CWS Rep), Sue Rowe, Karen Doeblner, Sue Terson

ACTIVITIES in 2020:

The Luncheon Circle met in January, February and March on the 2nd Monday of the month before the Covid-19 pandemic closed the church.

Coordinating Team meetings—in-person January & March, and through video conferencing rest of the year.

The 2020-2021 Bible Study, *Into the Light: Finding Hope Through Prayers of Lament*, led by Christine Stephens, barely got started before the stay-at-home orders came.

Irish Dinner with a Scottish Twist (1/24). Eighty dinners were served to happy diners.

Valentine Bake Sale (2/9)

Church Rummage Sale (planned for March 19, rescheduled 10/22). (Closed after the first day due to Covid-19 exposure.)

Supported with financial donations: Emmanuel Free Lunch, Home Meals Service, Laurel House, Park Church Memorial Fund, Newark Food Closet, PC/USA Mission Pledge (local Presbytery portion), PC/USA Mission Co-worker, Nadia Ayoub in Greece.

TREASURER'S ANNUAL REPORT: Please refer to our financial report for specific information.

SUMMARY:

Although most of our plans were cancelled by the pandemic in 2020, there were some bright spots. Presbyterian Women responded to the health crisis by sewing masks for health care workers and loved ones in the early months, before masks could be purchased in stores. PW and other Park Church members continued to volunteer in Newark food programs, for Laurel House Hospice Care and Family Promise Housing. With proceeds from a church dinner, bake sale and one day of the Rummage Sale, we were able to send some mission donations.

Elected PW officers for 2020-2022: Moderator/Co-Moderators—vacant (This duty will rotate among the officers; January 2021 meeting will be Chris Stephens; March 2021 meeting will be Sue Rowe); Recording Secretary—Pat Hart; Corresponding Secretary—Gwen Mix; Treasurer—Sue Rowe; Celebration Giving—unfilled; Bible Study Leader & Church World Service Rep—Christine Stephens.

We would love to see more of our ladies join us in PW activities when we are able to gather safely again. In the meantime, all are welcome to “virtually” attend a Coordinating Team meeting to help us plan future activities and to stay connected to each other. We look forward to gathering in-person for our monthly luncheons, our PW-sponsored Bible study and continuing our fundraising efforts that directly support the mission of the church, both here at home and around the world. We also look forward to hosting special, fun events that promote community fellowship, such as our Fall Tea in 2019. Covid-19 prevented us from gathering in our normal way in 2020, but we are hopeful that 2021 will get us back on track, and we hope that you will join us.

Submitted by Deb Compher & Mary Cree, PW Co-Moderators (2018-2020)

PROPERTY

The Property Team is tasked with performing or overseeing all aspects of facilities operations and maintenance related to Park Church's building and grounds, as well as Camp Hauser. This includes construction/renovations, heating, cooling, electric, water, plumbing, and safety.

2020 has been, to borrow a phrase, a year unlike any other. Full of activities – some planned and some unplanned. Some in person but most virtual. A “sometimes open – most times closed” scenario, trying to keep up with the forces exerted on us by the pandemic. Maintaining a welcoming facility of our size - once upon a time offering myriad opportunities - exerts demands on manpower and budget. While responsible for the facilities side of things, we're also called upon to assist groups and committees, both internal and community-based, with their functions throughout the year. These include weddings and funerals, the spring rummage and bake sales, spring grounds clean-up, the “kick-off to summer” chicken barbeque, various musical performances, Scout Pack 138, Finger Lakes Area chapter of Narcotics Anonymous, Alcoholics Anonymous, Daughters of the American Revolution, and many others. Sadly, many of these activities weren't able to take place in 2020. Hope, like the flower bulbs planted in fall, springs anew for 2021!

Accomplishments this year include: coordinating service visits for various vendors – HVACR, pipe organ and piano, code enforcement; safety inspections of gas-fired boilers and chairlifts and fire systems. We've completed the conversion of interior CFL lighting to brighter, longer lasting, more efficient LED lights. Our normal partnering with Scouts for spring cleanup/mulching was cancelled due to the church closing. Members and staff took on the tasks, helping to give the church grounds a welcoming, tidy appearance in spite of the distractions.

Foremost on our schedule this past year has been the completion of renovations/repairs and wrap-up of administrative tasks associated with the repair of the damaged roof truss in the east end of the southern roof. This involved working with environmental testing, structural engineers, local code enforcement, heavy-beam and general construction contractors, insurance representatives and legal resources. As we entered the new year contractors completed the flooring replacement in the lounge, kitchenette, entryways and upper floor classrooms impacted by the construction project. This allowed us to re-open the 2nd and 3rd floors to church and community activities after being unavailable for the past calendar year, only to see the church closed in March due to COVID restrictions.

Projects nearing completion or in the planning stages include: installation of an exhaust fan/stove hood in downstairs kitchen;; continued interior painting; sorting and organization of the basement, attic and other storage areas; identification and labeling of all electrical circuits, outlets, switches; creating work spaces in basement/boiler room for repair work; digital inventory of church contents and more.

Another on-going project is the documentation of all processes, operations and equipment in our church. This includes inspection schedules, owner manuals and operating instructions. Keeping everything organized, efficient and transparent is the best way to ensure our building is properly maintained and easy to understand. This paves the way for bringing new team members on-board quickly.

Our thanks to God and prior generations of Park Church members for this wonderful place of worship and community fellowship. Also, thanks to all who have volunteered their time and talents to make light work of tasks, however big or small. A special thanks to Rick Bald for all of his efforts in managing the truss repair and space renovation project. We look forward to resuming in-person worship as soon as it is safe to do so.

Peace and Health to All,
SCOTT BLONDELL
Property Team chair

CHURCH LIFE

Church Family Life Team Members:

Ellie Foote , Cheryl Lotz, Gwen Mix, Reverend Christopher Mergener, Eileen Taylor, and E.T. Trunick

2020 started off well at Park Church, as our team had two activities planned for each month. In particular, many of us enjoyed going to see "Big Fish, the Musical" at Newark High School together. We also had about 50 of us in attendance for Scout Sunday and the Continental Breakfast that same weekend. How quickly we had to adjust to a "new normal." While Facebook Live church services and Zoom conferences have added to our capabilities, we regret that internet and computer use is not available to everyone, as a means of staying connected. Covid-19 definitely put a damper on what we can offer. If you have any thoughts on how we might make connections during these difficult times, our team would appreciate hearing from you. Hopefully, we will eventually be at a point where we can get together again.

We appreciate all of you who have participated in the events that we were able to offer this year. We thank you for your support with donations made, advertisements created, and with room and equipment set up and clean up afterwards.

2020 Events Organized or Attended:

1-10 Free Movie Night with Refreshments

1-17 Potluck Dinner and Game Night

2-07 Potluck Dinner and Game Night

2-21 Free Movie Night with Refreshments

3-06 "Big Fish, the Musical" at Newark High School

3-08 Scout Sunday Continental Breakfast

5-17 Friday Night Zoom Ice Cream Social

6-12 Friday Night Zoom Ice Cream Social

7-10 Friday Night Zoom Ice Cream Social

Attendance at Numerous Zoom Coffee Hours after Church Services

CHERYL LOTZ

Church Family Life Chair

MISSION

2020 Mission Team Report - 2020 Mission Team budget: \$2000

Mission team members included Sandi Marcano, Deb Compher, Carol Thurston, ET Trunick, Paul & Jeanne Salisbury, Karen & Bill Doebler

Policy Decision: If Peace & Global Witness/ Pentecost offering monies received are less than \$200, the entire amount will be sent to PCUSA. Amounts \$200 or larger will be shared per PCUSA guidelines. Mission income will be forwarded from church account on a quarterly or semi-annual basis.

Mission monies forwarded in 2020: Pentecost: \$135 offering to PCUSA

Heifer Int. \$732.61

Family Promise: \$1150.10

WARE: \$ 200 (Wayne Action for Racial Equality)

Mission Monies collected in 2020: One Great Hour of Sharing: \$235 (Feb 26 – Apr 12, 2020)

Christmas Joy offering: \$ 30

Christmas Offering: \$164

Thanksgiving Offering: \$70

Communion: \$166

Pentecost: \$ 230

Peace & Global Witness: \$ 290

Food Closet: \$ 100.89 (from book sales) + \$43.84

Souper Bowl: \$ 51.43

Family Promise of Wayne County - Anne Rogers and Carol Thurston served as Park Church coordinators until August. Linda Werts stepped in to do the meals and hospitality coordinating, as Newark Community Coordinator. Mission Team sent Family Promise \$125 in March and \$60 in October. This helped cover our "host weeks" costs.

Session voted to discontinue the Park Church covenant with Family Promise effective at the end of December 2020.

The PPC Book Sale coordinators, Anne Rogers, Karen Doebler, Ginnie Bodine, are stepping down.

Mitten Tree Items from tree delivered to the Victim Resource Center

Socks Sunday March 22 – 302 pairs of socks were delivered by Sandi M and Natalie Lemmon in June to the

ABCD school and daycare in Williamson. This serves migrant families who are employed in Agri-businesses in the county.

Calendar Sales - \$75 was forwarded to ABCD center from cash collected from sales of calendars donated by a member of the church handbell choir.

Adopt A Highway (Rte 88 S) – no clean-up in 2020

Blue-out Sunday Minute for MIssion – Thank-you to Curt Richardson, Sandi Marcano Jeanne & Paul Salisbury, Richard Watson, Natalie Lemmon and Karen Watson for their presentation on March 1. Scott Blondell took a picture which was forwarded to PCUSA Mission to show how Park celebrate this Sunday at Park.

Free Lunch Program : Forwarded \$100 in April.

Habitat for Humanity: Sent \$100 to Habitat for Humanity Wayne County in July.

Victim Resource Center: Sent \$100 to VRC in April.

Food Closet – secured a food \$1200 grant from Presbytery for money for the Food Closet.

Food Closet needs more volunteers at Emmanuel Methodist Church. Contact: Lisa Barrett @ 315-351-6474

Spring Volunteer Days @ Camp Whitman (May 7, 8, & 9) 9:00 A.M. to 4 P.M. each day – cancelled due to COVID

#Giving Tuesday - Dec 3, 2020 - Team reviewed article from Presbyterians Today. Team agreed to plan a way of recognizing "Giving Tuesday" held annually on the first Tuesday in December. YTBD

Martin Luther King Event - Attendees met at the Park Church at 11:30 am and shared rides to host church in Lyons

2020 LWW Thank-you Video- never shown to congregation

Mission 2020 Year Report compiled by Sandi Marcano & Paul Salisbury

WORSHIP & MUSIC

Worship Team Members :

Sarah Humphrey, Natalie Lemmon, Yoshiko Arahata, Karen Cameron

With COVID -19, the church was challenged to find and present new ways of worship in 2020. When the church closed in March, we immediately went to on-line virtual worship services via Facebook Live. While it was not an ideal way to worship, we learned that church is more than just a building. We had several people joining in worship via our online offering and we were able to broaden our worship community. We had on average between 100-150 people viewing the service each week (with as many as 225 and as few as about 75).

As we continued to worship online, we were able to perfect our offerings on Sunday morning to include recorded music from Yoshiko Arahata and vocals from Sarah Humphrey and other guest singers. We have also had bell performances by Natalie Lemmon. While COVID -19 slowed us down for a bit, the services continued to be vibrant into the fall and holiday season.

Since Reverend Christopher left, it has been challenging to find pulpit supply each Sunday. We have been fortunate to be able to link to Western Presbyterian Church in Palmyra and First Presbyterian Church in Lyons. We were blessed that the Presbytery approved Pastor Carol Wilson for the entire Advent season and Christmas Eve. She brought the "Hanging of the Greens" to our congregation as our first experience. Pastor Carol gave so much of herself to bring us the beautiful Christmas message. Ed and Cheryl Lotz, Sarah and Bella Humphrey, Cari Taylor, Natalie Lemmon, and Karen Cameron assisted with the lighting of the Advent wreath. Music was wonderful with contributions from Yoshiko Arahata, Sarah Humphrey, Rick Bald, Bella Humphrey, Natalie Lemmon, and Kristine Joslyn.

Most recently we have enjoyed services by Rev. Cynthia Huling-Hummel and Elder Susan Frost. **None** of our online services would be possible without all the time and effort that J. Joslyn puts into creating the PowerPoint, recording, organizing, finding additional music selections, and often dealing with limited time constraints. We are so appreciative of his commitment to the church.

We welcome any creative suggestions or assistance with worship that you are willing to offer.

Karen Cameron

Worship & Music Team Leader

CHANCEL BELL CHOIR

Even though we were put out of service because of Covid 19, we were able to play in Jan. Feb. and March. We also played once a month from last Jan. through June. It was an exciting year because we gained 2 people from other churches. One has played bells in the past, and the other person picked it up in 2 rehearsals!! Once, the church did shut down, we did one bell solo virtually, and also a combined voice and bell piece for Christmas Eve. We were able to have our June bell party outdoors on a big deck. It was fun to go over all the pieces we'd played, the good, the mistakes,, and laugh about it. I dearly miss my "bell family" and pray that we will be back together soon, and be able to ding-a-ling to our hearts content.

Blessings and Peace.

NATALIE LEMMON

ADULT CHOIR

The adult choir began 2020 singing praises to God during Sunday morning worship services, taking 1 Sunday off a month. We all know what happened in March. The new safety measures make it impossible to sing with a full choir, but we have begun to present small group performances. If anyone would like to contribute to virtual worship with a musical selection, please let me know. You can reach me via email at shumphrey8008@gmail.com.

Let's pray that we can make a joyful noise to the Lord at some point in 2021!

STEWARDSHIP

2021 Stewardship Team consisted of Dale Groover. Stewardship pledge forms were mailed out in December 2020 due to closure of Park Church in October/November based on COVID virus concerns. Pledge forms were to be returned by December 17, 2020. The usual Consecration Sunday scheduled in November each year did not happen since all worship services were virtual (Facebook live).

CHRISTIAN EDUCATION

Team Members:

Christine Stephens, Eileen Taylor, Karen Cameron

Adult Christian Education –

We had two Lenten bible studies that were started before shutting down for COVID-19. One was “Bread and Broth” where we served a basic meal (soup and bread) and studied the biblical characters Jacob, Joshua, and Moses. We had plans to look at Elisha, John the Baptist and Jesus but were not able to complete the study. The second was a regular bible study, using the book, Jesus: The God Who Knows My Name. This study was held for two weeks and not completed.

We did a book study in the fall using the book, How to Be Antiracist. This study was done virtually with members from Park Church and members from the community. The book helped us explore how we are racist and challenged those who participated to own our “white privilege” and look for ways to be open and more inclusive in language and actions.

2020 Recipient of Glenn R. Stevens Award (\$100) and Alex & Peg Mechie Memorial Scholarship (\$500) – McKenna Briggs

McKenna graduated from Newark High School in June, as an honor student.

She has been an active member at Park Presbyterian Church throughout the years. She has participated in Sunday School, bell choir, served a full term as a deacon, performed instrumentally for church services, assisted teachers with Sunday School classes and worked in the nursery. From these experiences, McKenna has been greatly influenced and wants to focus her ability to help others by pursuing a career in social work. She was accepted at Monroe Community College. Additionally, she has been working with some families who are providing distance learning for their children.

MEMBERSHIP

Members: Pat Hart, Paul Salisbury, Ellie Foote

Updated registry book for deceased members, inactive members, and member transfers in year 2020. No baptisms or new members in 2020. All old church records were forwarded to the Philadelphia PCUSA Historical Society in 2019 for permanent storage. Digital copies (searchable pdf files) of all old Session and Trustee records are available in the church office.

DEACONS TREASURER'S REPORT

Balance January 1,2020	\$763.01	
Receipts		0.00
		0.00
Total Receipts		\$0.00
Expenses		0.00
		0.00
Total Expenses		\$0.00
Balance December 31, 2019	\$763.01	

SUE ROWE

Deacons Treasurer

PRESBYTERIAN WOMEN TREASURER'S REPORT

CHECKING ACCOUNT BALANCE JANUARY 1, 2019	998.50
Bake Sales	86.50
Rummage Sale	989.00
Birthday Offering	5.61
Least Coin Offering	16.38
PW Dues	78.15
TOTAL RECEIPTS	2,072.64
Irish Dinner Advertising	81.00
Irish Dinner Expense: Groceries	179.19
USA Mission Exp Lunch	26.14
Postage	170.00
Horizons Magazine Subscription	24.95
Kitchen Supplies	30.00
Total PW Expenses Disbursed	485.14
GIFTS & DONATIONS	
PPC Flower Fund	25.00
Emmanuel Free Lunch	150.00
Home Meals Service	100.00
Laurel House	75.00
Memorial Fund (Nadine Brill)	50.00
Mission Worker PC(USA) Nadia Ayoub	250.00
Newark Food Closet	250.00
PC (USA) PW Mission Pledge	250.00
50% of Irish Dinner Profits (shared with PPC)	318.41
TOTAL GIFTS & DONATIONS DISBURSED	1,468.41
TOTAL PW DISBURSEMENTS FROM CHECKING	1,953.55
CHECKING ACCOUNT BALANCE DECEMBER 31, 2020	1,117.59
COMMUNITY SAVINGS BALANCE JANUARY 1, 2020	8,300.44
2019 Interest Earned	2.00
COMMUNITY SAVINGS BALANCE DECEMBER 31, 2019	8,302.44
NEW COVENANT MUTUAL FUNDS BALANCE JANUARY 1, 2020	14,680.24
NEW COVENANT MUTUAL FUNDS BALANCE DECEMBER 31, 2020	16,876.32

Submitted by Ellie Foote, PW Treasurer & Mary Cree PW Co-Moderator

CHURCH BUDGETS

BUDGETED & ACTUAL INCOME/EXPENSES FOR 2020 AND FINAL BUDGET FOR 2021			
	2019	2019	2020
BUDGETED OFFERINGS			
Giving	82,350.00	72,356.00	82,350.00
Plate Offering	2,000.00	1,497.	2,000.00
Memorial	500.00	0.00	500.00
Easter/Lenten Offering	200.00	25.00	200.00
Thanksgiving Offering	0.00	0.00	0.00
Communion Offering	150.00	141.00	150.00
Christmas Offering	100.00	100.00	100.00
Miscellaneous	100.00	17,741.99	100.00
TOTAL BUDGETED OFFERINGS	85,400.00	91,860.54	85,400.00
OTHER INCOME			
Church Life	100.00	0.00	100.00
TOTAL OTHER INCOME	100.00	0.00	100.00
FUNDRAISING			
Chicken BBQ	3,500.00	0.00	3,500.00
Harvest Dinner	3,200.00	0.00	3,200.00
Homemade Soup Sale	0.00	697.00	700.00
Irish Dinner	0.00	140.00	150.00
TOTAL FUNDRAISING	6,700.00	837.00	7,550.00
MISSION			
Pentecost (40%)	50.00	0.00	50.00
Peace & Global Witness (25%)	75.00	0.00	75.00
Miscellaneous Mission	0.00	0.00	0.00
TOTAL MISSION	125.00	0.00	125.00
PROPERTY			
Green Team	0.00	0.00	0.00
Building Use	700.00	250.00	300.00
Miscellaneous Property	50.00	0.00	50.00
TOTAL PROPERTY	750.00	250.00	350.00
WORSHIP & MUSIC			
Organist Wedding/Funeral Pay	0.00	0.00	0.00
Flower Fund	1,000.00	168.00	200.00
Miscellaneous Worship & Music	0.00	0.00	0.00
TOTAL WORSHIP & MUSIC	1,000.00	168.00	200.00
TOTAL INCOME	94,075.00	93,115.00	93,725.00

	2019	2019	2020
ADMINISTRATION			
Secretary Salary	25,568.08	21,096.00	26,758.00
Pastor Salary	32,283.00	24,802.00	16,000.00
Pastor Social Security Allowance	4,353.38	13,036.00	1,224.00
Pastor Housing	24,624.00	18,917.00	0.00
Pastor Pension & Benefits	6,175.23	5,828.00	3,000.00
Pastor Study Leave	1,000.00	0.00	500.00
Pastor Medical	14,032.92	13,846.00	0.00
Pastor Death and Disability	560.82	423.00	0.00
Pastor Supplies	250.00	828.00	250.00
Pastor Mileage	1,000.00	233.00	500.00
Pastor Other	100.00	285.00	100.00
Office Supplies	1,500.00	2,232.00	2,500.00
Postage	1,000.00	462.00	1,000.00
Unbudgeted Expense	1,500.00	463.00	1,500.00
TOTAL ADMINISTRATION	113,947.43	102,451.00	53,332.00
SESSION			
Supplies	0.00	0.00	0.00
Approved Church Support	100.00	19.00	100.00
TOTAL SESSION	100.00	19.00	100.00
CHRISTIAN EDUCATION			
Book & Resources	200.00	389.00	200.00
Miscellaneous	0.00	0.00	0.00
Coordinator Salary	0.00	0.00	0.00
Curriculum	0.00	0.00	0.00
Supplies	0.00	0.00	0.00
Youth Group	0.00	0.00	0.00
TOTAL CHRISTIAN ED	200.00	389.00	200.00
FUNDRAISING			
Advertising	300.00	303.00	300.00
Celtic/Christmas Bazaar	0.00	0.00	0.00
Chicken BBQ	2,300.00	0.00	2,300.00
Harvest Dinner	2,000.00	0.00	2,000.00
Miscellaneous	100.00	0.00	100.00
TOTAL FUNDRAISING	4,700.00	303.00	4,700.00
CHURCH LIFE			
Supplies	200.00	259.83	250.00
Church Life Other	0.00	0.00	0.00
TOTAL CHURCH LIFE	200.00	259.83	250.00

	2019	2019	2020
<u>FINANCE</u>			
Stewardship	250.00	84.00	250.00
Unbudgeted Expense	200.00	0.00	200.00
Finance Other	0.00	0.00	0.00
TOTAL FINANCE	450.00	84.00	450.00
<u>MEMBERSHIP</u>			
Supplies	50.00	0.00	50.00
Gifts	0.00	0.00	0.00
Miscellaneous	100.00	10.00	100.00
TOTAL MEMBERSHIP	150.00	10.00	150.00
<u>MISSION—LOCAL</u>			
Mission Team	1,000.00	562.00	1,000.00
Other	1,000.00	106.00	1,000.00
TOTAL MISSION—LOCAL	2,000.00	668.00	2,000.00
<u>MISSION—DENOMINATIONAL</u>			
Per Capita	10,000.00	3,150.00	6,700.00
Presbytery of Geneva	3,500.00	0.00	3,500.00
Synod	50.00	0.00	50.00
General Assembly	300.00	0.00	300.00
TOTAL MISSION—DENOMINATIONAL	13,850.00	3,150.00	10,550.00
<u>PERSONNEL</u>			
Background checks	0.00	0.00	0.00
NYS Disability Expense	400.00	202.00	300.00
NYS Unemployment Insurance	284.00	164.00	200.00
Payroll Services	1,500.00	1,280.00	1,500.00
Worker's Comp. (NYSIF)	0.00	0.00	0.00
FICA Church Employer	3,037.25	2,290.00	3,134.00
Medicare	710.33	535.00	733.00
Personnel—Other	0.00	0.00	0.00
Pastor Nominating	0.00	0.00	500.00
TOTAL PERSONNEL	5,931.58	4,471.00	6,637.00

	2019	2019	2020
PROPERTY			
Custodian Salary	6,380.00	2,656.00	6,463.00
Heat & Electric	11,000.00	6,891.00	8,000.00
Phone & Internet	1,500.00	1,388.00	1,500.00
Garbage	600.00	471.00	600.00
Water & Sewer	500.00	137.00	300.00
Utilities—Other	0.00	37.00	0.00
Insurance	12,000.00	11,260.00	12,000.00
Bldg, Equip, Maint, Repairs	23,600.00	4,709.00	13,000.00
Building Supplies	1,200.00	993.00	1,200.00
Service Contracts	4,000.00	5,252.00	4,000.00
Equipment Replacement	500.00	3,337.00	500.00
Miscellaneous	100,000.00	216.00	0.00
Maintenance—Other	3,000.00	77.00	3,000.00
TOTAL PROPERTY	164,280.00	38,997.00	61,163.00
WORSHIP & MUSIC			
Organist Salary	9,870.12	7,583.00	10,082.00
Chapel Organist	0.00	0.00	0.00
Choir Director	5,099.90	4,019.00	5,166.00
Bell Choir Director	2,051.92	1,576.00	2,079.00
Substitute Organist	0.00	0.00	0.00
Choir Music/Supplies	150.00	30.00	150.00
Bell Choir Music/Supplies	0.00	0.00	0.00
Organ & Piano Music	0.00	0.00	0.00
Worship Music	0.00	0.00	0.00
Flower Fund	1,000.00	75.00	200.00
Substitute/Guest Musicians	2,000.00	300.00	1,000.00
Pulpit Supply	500.00	272.00	12,000.00
Worship Supplies	200.00	0.00	200.00
Licensing	500.00	384.00	500.00
Deacons Expense	0.00	0.00	0.00
TOTAL WORSHIP & MUSIC	21,371.94	14,239.00	31,377.00
TOTAL EXPENSE	327,180.95	165,025.83	170,639.00
SURPLUS (DEFICIT)	-233,105.95	-71,910.83	-76,914.00

CHURCH STAFF

J. JOSLYN, *Office Administrator*

JAMIE HARRIS, *Sexton*

YOSHIKO ARAHATA, *Organist*

SARAH HUMPHREY, *Choir Director*

NATALIE LEMMON, *Bell Choir Director*

PARK PRESBYTERIAN CHURCH

110 MAPLE COURT NEWARK, NY



Page Left Intentionally Blank